



Disclaimer

This user manual is provided as a free service by FixYourDLP.com. FixYourDLP is in no way responsible for the content of this manual, nor do we guarantee its accuracy. FixYourDLP does not make any claim of copyright and all copyrights remain the property of their respective owners.

About FixYourDLP.com

FixYourDLP.com (<http://www.fixyourdpl.com>) is the World's #1 resource for media product news, reviews, do-it-yourself guides, and manuals.

Informational Blog: <http://www.fixyourdpl.com>

Video Guides: <http://www.fixyourdpl.com/guides>

User Forums: <http://www.fixyourdpl.com/forum>

FixYourDLP's Fight Against Counterfeit Lamps:

<http://www.fixyourdpl.com/counterfeits>

Sponsors:

RecycleYourLamp.org – Free lamp recycling services for used lamps:

<http://www.recycleyourlamp.org>

Lamp Research - The trusted 3rd party lamp research company:

<http://www.lampresearch.com>

Discount-Merchant.com – The worlds largest lamp distributor:

<http://www.discount-merchant.com>



FixYourDLP.com

Sponsored by 

Panasonic

Part for Network Functions and SD Memory Card Functions

(PT-L735NTE)



Discount-Merchant.com (800) 281-8860
THE TRUSTED SOURCE FOR PROJECTOR LAMPS AND ACCESSORIES

Contents

Notes for use	4	To create a backup copy of the data stored on the SD card.....	5
Information on SD Memory Card	4	Write protection switch	5
Instructions on handling	4	Information on wireless card	6
Instruction on storage	4	Available channels	8
For protection of important data	4		
Typical applications of network functions / SD Memory Card	9	SD Memory Card	9
Examples of use of network functions	9	Examples of use of network functions / SD Memory Card	10
Insertion and removal of wireless card and SD Memory Card into / from the projector	11	Wireless card	11
		SD Memory Card	12
Insertion and removal of wireless card into/from personal computer	13		
Installation of software	14	Wireless LAN Driver	15
Wireless Manager 3.0/			
Image Creator 1.0A	14	Releasing the connection to the projector ..	23
Wireless Simple Connection (live mode)	21	Temporary releasing.....	23
Operations on the projector	21	Complete releasing.....	23
Operations on the personal computer.....	22		
Network setting	25	Setting up the projector	27
Use of inter-PC communications	25	Settings on the personal computer	30
If the communication mode of 802.11 ad hoc (peer-to-peer) is selected:.....	25	Settings of TCP/IP	30
Use of access point (AP)	26	Settings for use of optional wireless card (ET-CDWL2E).....	34
Setting example	26		
Use of Wireless Manager 3.0	38	Setting of capture delay time	41
Start-up	38	Presentation mode	42
Live mode	38	Progress bar	42
Selecting the transfer mode	38	Switching display mode	42
In live mode	39	Other functions	44
Quitting and resuming live mode	39	Searching projector.....	44
Meeting mode (screen capture)	39	Registering projector.....	44
Selection of capture format.....	40	Deleting projector	44
Operations after image acquisition	40	Confirming connection	44
Setting of capture delay time	40	Displaying the sender, sender's name ..	45
"PowerPoint ⇒ Presentation" mode	41	Setting a shortcut key	45
Presentation mode	41	Setting automatic play	45
		Setting Simple Connection	45

Contents

Use of Web browser control46
Settings on the projector.....46
 Web control.....46
 Web power supply46
 Web password46
Settings on the personal computer 47
Operation of Web browser control ..48
 Top screen48
Projector control49
 Basic control screen49
 Option control screen49
 Monitor information screen50

 SD control51
 SD file list screen51
 SD thumbnail screen51
 Presentation screen52
 Changing password52
Using a PDA53
 Starting the Web browser control
 (PDA)53
 Top screen53
 Menu screen.....54
 Projector Control.....54
 SD Control55
 Status55

Use of Image Creator 1.0A....56
Starting/ending Image Creator 1.0A.....56
 Start-up.....56
 End56
Functions on the main screen56
**Converting and saving captured
images.....58**
**Capturing presentation files created with
Microsoft PowerPoint97/2000/200260**
**Capturing JPEG, BMP, TIFF or PNG files
created with other applications61**
 Press the "Capture image" button ..61
 Images not to be captured61
 Capturing files by drag-and-drop
 operation.....61
 Sorting images62

 Deleting images62
 Make conversion settings when
 writing an image63
DCF standard65
 Directory (folder) name65
 File name65
 File format.....65
How to use SD card66
Playing images of SD Memory Card.....66
SD Viewer (SD guide display)67
 Folder selection screen.....67
 File selection screen.....67
Settings of automatic play (auto play) ..68

Uninstallation of software70
Wireless Manger 3.0.....70

Image Creator 1.0A70
Wireless LAN Driver.....70

Explanation of terms71
Before placing a repair order74

Trademark Information.....76



Discount-Merchant.com (800) 281-8860
THE TRUSTED SOURCE FOR PROJECTOR LAMPS AND ACCESSORIES

Notes for use

Information on SD Memory Card

This SD card is a semiconductor memory with the size of 24mm x 32mm x 2.1mm, as small as a postage stamp, and is expected to be a next-generation recording medium that replaces minidisks (MDs), compact disks (CDs) and cassette tapes. The card allows repetition of data reading, writing and deleting.

■ Instructions on handling

Abstain from the following:

- To disassemble or modify the card
- To give the card a strong impact, twisting, bending, dropping, treading, or water wetting
- To rub the card with a sheet of cloth or plastics or to bring the card near to anything that is likely to generate static electricity or electromagnetic field.
- To touch the metallic terminal of card with hand or metallic object, to affix stickers, or to stain the card.
- To peel off the label that is affixed to the card.
- To affix other labels or stickers.
- To insert the card into a device that does not accept an SD card (e.g., device for multimedia cards).
- To insert other matters than SD Memory Card in the SD Memory Card slot of the projector.
- To use cracked or deformed card.
- To use the card in a moist place such as bathroom or in a dusty place such as warehouse.

■ Instruction on storage

Be sure to put the card in the case when it is taken out from the main body.

- Do not put the card in a vehicle or in a place exposed to direct sunlight where it may become hot.
- Do not keep the card in a vehicle that may become hot, a place exposed to direct sunlight or other places in which the temperature is likely to increase, or a place in which corrosive gases may arise.

■ For protection of important data

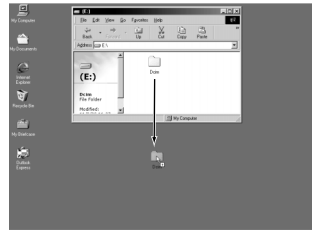
Do not turn off the power or remove the SD Memory Card when data is being read or written (or when the SD Memory Card access lamp is blinking). Doing this may destroy the data.

- Do not forget to make backup of the data stored in the SD card. Note that user's important data is subject to potential destruction although it is very rare to occur.

Notes for use

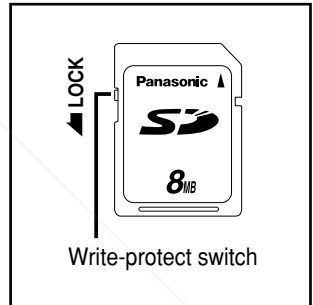
■ To create a backup copy of the data stored on the SD card

Double click and open the icon of SD card drive in My Computer of your personal computer (on the desktop if your computer is Macintosh) and drag and drop the "DCIM" folder onto desktop (while pressing the "Option" button, for Macintosh machine). This operation can create copies of all data within the "DCIM" folder into your personal computer.



■ Write protection switch

- Putting the write-protection switch of SD card to the "LOCK" position will disable image-editing operation such as deleting or moving on the projector (attempt of operation will bring error message).
- If the SD card is inserted into the personal computer by means of the PC card adaptor while the write-protection switch of SD card is set to the "LOCK" position, a blue-screen warning indication will appear when access is made. If this occurs, press any button on the keyboard of your PC to return the indication to the original one. Before using an SD card in your personal computer, ensure that the write-protection switch is not set to the "LOCK" position.



Please be advised of the following information in advance:

- The manufacturer shall not be responsible for any damage, whether direct or indirect, caused by the use of or by the fault of the product.
- The manufacturer shall not be responsible for any damage or destruction of data caused by the product.

Notes for use

Information on wireless card

The optional wireless card (ET-CDWL2E) uses radio wave in the 2.4 GHz band. Although it is not necessary to have a license for radio station to use the wireless card, fully understand the following instructions:

■ Do not use the cards near other sources of radio emissions.

The following devices may use the same frequencies that are used by the wireless card. If the wireless card is used near such devices, radio interference may prevent successful communication, or it may result in slower communication speeds being achieved.

- Industrial, scientific, medical equipment, etc
- Electric stoves, etc
- Built-in radio devices used for identifying moving equipment in industrial production lines
- Certain low-power radio devices

■ Keep the wireless card as far away as possible from devices such as mobile telephones, TVs and radios when using such devices

Devices such as mobile telephones, TVs and radios use different frequencies from the wireless card, so that there will be no effect on either wireless card communication or on reception or transmission for such devices. However, radio emissions from the wireless card may cause video or audio interference.



Discount-Merchant.com (800) 281-8860
THE TRUSTED SOURCE FOR PROJECTOR LAMPS AND ACCESSORIES

Notes for use

■ **Radio emissions from the wireless card will not travel through steel framework, metal sheets or concrete.**

It is not possible to keep communication through walls or floors made of reinforcing steel bars, metals or concrete although it is possible to keep communication through walls and floors made of wood or glass (excluding glass reinforced with metal wires).



Discount-Merchant.com (800) 281-8860
THE TRUSTED SOURCE FOR PROJECTOR LAMPS AND ACCESSORIES

Notes for use

■ Available channels

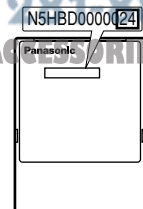
The channels (frequency bandwidth) that are available for the wireless card to use will vary depending on the country or area where the wireless card is being used. Refer to the following table as a guide.

Country / Area	Certification	Last two digits of card number *	Operating channels	Frequency band (median frequency)
Japan	ARIB STD33 & T66	22	1~14	2 412 MHz~ 2 484 MHz
USA	FCC part 15	23	1~11	2 412 MHz~ 2 462 MHz
Canada	IC			
Taiwan	DGT			
Malaysia	SIRIM			
UK, Germany, France, Italy, Belgium, Austria, Sweden, Norway, Denmark, Switzerland, Holland, Finland, Portugal, Greece, Thailand, Korea, Australia, New Zealand	ETSI 300.328	24	1~13	2 412 MHz~ 2 472 MHz
Spain	ETSI 300.328	25	10,11	2 457 MHz~ 2 462 MHz
Singapore	IDA	26	10~13	2 457 MHz~ 2 472 MHz

* To check the region of intended use for the wireless card which you have purchased, check the last two digits of the product number which appears on the label on the reverse side of the card in the position shown in the illustration at right.

Note:

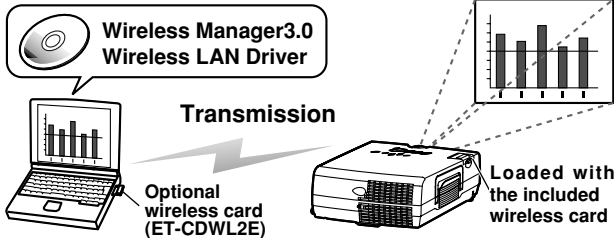
The wireless card cannot be used in countries other than the country of purchase. If you try to use it in other countries, you may be infringing the radio transmission laws and regulations of that country.



Typical applications of network functions / SD Memory Card

Examples of use of network functions

Projecting images from the personal computer by wireless Installation



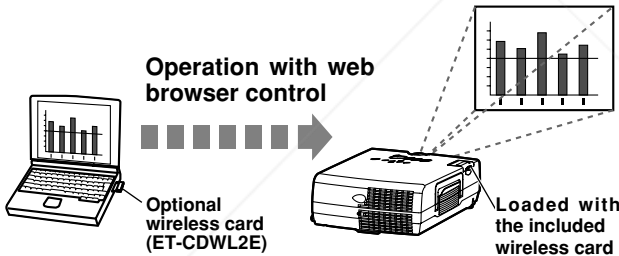
Images from personal computer can be projected by wireless all the time

For Wireless Easy Connection, see page 21

For Network settings, see page 25

For Installation of software, see page 14

Controlling the projector using Web browser control



Using the Web browser, it is possible to access the projector and control power ON, OFF and other functions of the projector.

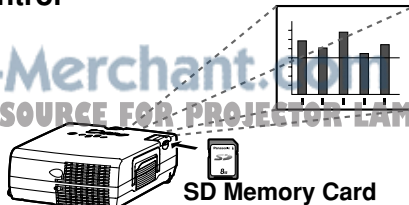
For Wireless Easy Connection, see page 21

For Network settings, see page 25

For Web browser control, see page 46

SD Memory Card

Projecting images from SD card using Web browser control



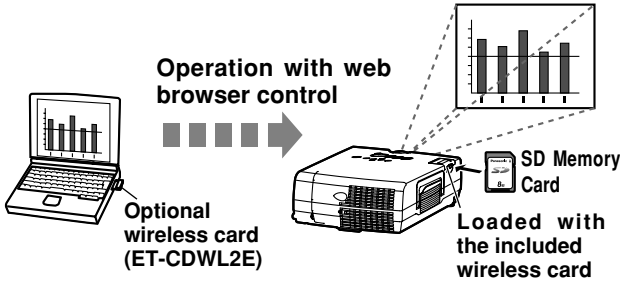
This card allows the user to view list of images (thumbnail images) recorded on the SD Memory Card to perform automatic play such as slide show.

See page 66

Typical applications of network functions / SD Memory Card

Examples of use of network functions / SD Memory Card

Projecting images from SD card using Web browser control



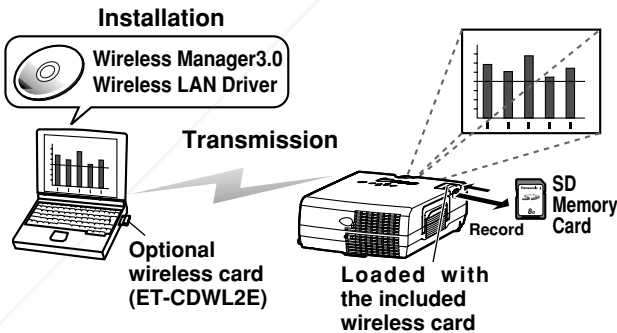
The Web browser allows the user to access the projector and to project the image data stored on the SD Memory card inserted in the projector.

For Wireless Easy Connection, see page 21

For Network settings, see page 25

For Web browser control, see page 46

Transferring image data from personal computer to the projector and recording them onto the SD Memory card inserted in the projector



The supplied Wireless Manager 3.0 allows the user to transfer image data from the personal computer to the SD card inserted in the projector and to record the data on the card. Thus the user can project images changing very quickly to desired ones.

For Wireless Easy Connection, see page 21

For Network settings, see page 25

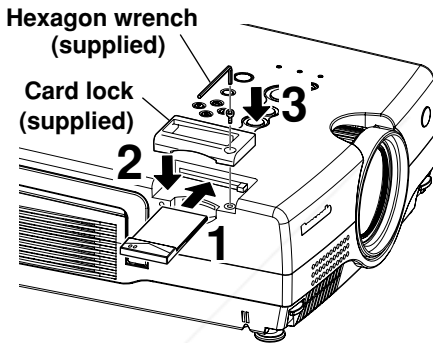
For Installation of software, see page 14

Insertion and removal of wireless card and SD Memory Card into / from the projector

Wireless card

Insertion

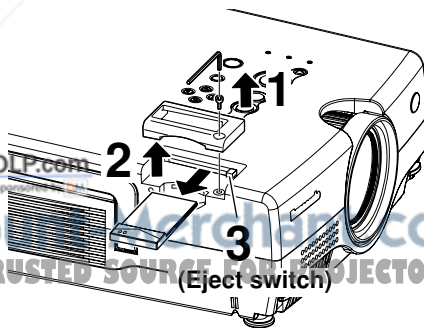
- Turn off the power by putting the [MAIN POWER] switch to the "○" position.
- Forced insertion of the card in wrong direction may cause failure.



- 1** Insert the card until it is locked.
- 2** Attach the card lock.
- 3** Secure the card lock with the supplied screw.

Removal

Turn off the power by putting the [MAIN POWER] switch to the "○" position.



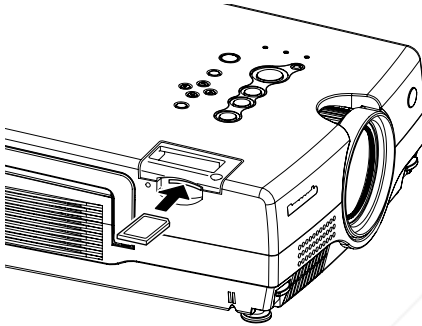
- 1** Remove the screw of card lock.
- 2** Remove the card lock.
- 3** Press the eject switch to take out the card.

Insertion and removal of wireless card and SD Memory Card into / from the projector

SD Memory Card

Insertion

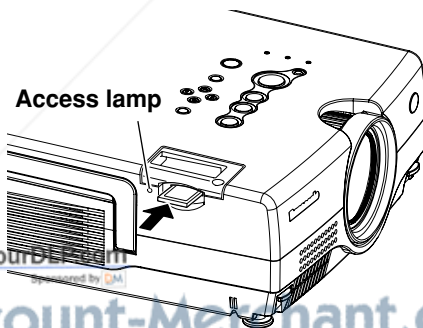
Forcible insertion of the SD card in a wrong direction may cause a fault.



Insert a card until it is locked

Removal

Be sure to confirm the access lamp is not blinking before card removal. Removing the card while the lamp is blinking may destroy the data on the card.



Press the centre to release the lock and take out the card.



FixYourDefect.com
powered by DM

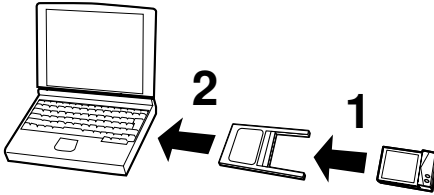
Discount-Merchant.com (800) 281-8860

THE TRUSTED SOURCE FOR PROJECTOR LAMPS AND ACCESSORIES

Insertion and removal of wireless card into/from personal computer

Insertion

- Before inserting the wireless card, be sure to install the included Wireless LAN Driver software (see page 15).
- This illustration is for the case of optional wireless card (ET-CDWL2E). For other cards, see the instruction manual for the relevant card.
- Also read well the instruction manual for your personal computer.
- Forced insertion of the card in wrong direction may cause failure.



1 Fit the card to the adaptor.

2 Insert the card and the adaptor into the PC card slot of the personal computer.

Removal

Quit Wireless Manager 3.0 if it is in use.

1 Left-click the [PC card] icon appearing on the task bar at the right bottom of screen.

If the [PC card] icon is not appearing:

Go to [Start Menu]→[Control Panel] and open [PC card]. Checkmark [Show control on the task bar] and press [OK].

2 Select [Panasonic Wireless LAN PC Card] and click [Stop].

3 Press [OK] and take out the wireless card.

Installation of software

Wireless Manager 3.0 / Image Creator 1.0A

Wireless Manager 3.0:

This software can be used to transmit screen images and image files (JPEG and PNG images) from the personal computer to the projector through wireless LAN.

Image Creator 1.0A:

This software can be used to convert PowerPoint files into image data.

note:

- Quit all software in action on Windows. Otherwise your installation may be unsuccessful.
- Uninstall Wireless Manager 2.0 or Image Creator 1.0 if it has been installed before this installation. (See page 70)
- If your PC runs on Windows XP/2000, the authority of Administrator is required for this installation.

1 Set the supplied CD-ROM in the CD-ROM drive.

This automatically activates the installation program, displaying a window as shown below.



Note:

If the program is not automatically launched, double-click [Easy Install] → [Easy_inst.exe] in the CD-ROM.

2 Click [Wireless Manager 3.0].

Follow the instructions on the screen to carry out installation.

3 Click [Image Creator 1.0A].

Follow the instructions on the screen to carry out installation.

Installation of software

Wireless LAN Driver

A Wireless LAN Driver must be installed to use the wireless card on the personal computer.

- The following section describes installation of the optional wireless card (ET-CDWL2E). For other cards, see the instruction manual for the relevant card.

Notes :

- Installation of the Wireless LAN Driver in your personal computer must have been completed before inserting the wireless card into the computer.
- If the card is accidentally inserted in the personal computer before installation of the driver, the automatic hardware detection will find the card as an unidentified device. If this is the case, do not remove the card, but carry out the following steps with the card kept inserted before installation.

For Windows XP/2000: Go to [Control Panel] → [System] → [Hardware] → [Device Manager], and if any unidentified device or Panasonic Wireless LAN PC Card is found in the list, uninstall the item.

For Windows 98 SE/Me: Go to [Control Panel] → [System] → [Device Manager], and if any unidentified device or Panasonic Wireless LAN PC Card is found in the list, uninstall the item.



Discount-Merchant.com (800) 281-8860
THE TRUSTED SOURCE FOR PROJECTOR LAMPS AND ACCESSORIES

Installation of software

For Windows XP:

1 Click [Wireless LAN Driver] on the screen of Procedure 1 on page 14.

This will activate the installer for wireless LAN

2 Click [Next].

A License Agreement message appears.

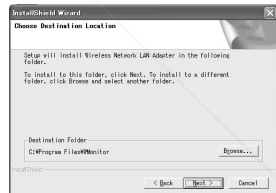
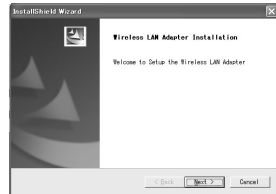
3 Click [Yes].

4 Specify the destination for saving the utility and click [Next].

A logo authentication message appears.

5 Click [Continue].

6 Click [Finish].



Installation of software

7 Insert an optional wireless card through a CF card adaptor.

(See page 13)

This will activate Found New Hardware Wizard.



8 Confirm that [Automatically install the software] is checkmarked and click [Next].

A logo text message appears.

9 Click [Continue].

A wizard completion message appears.



10 Click [Finish].

A logo authentication message appears.



When installation is complete, confirm as follows:

Go to [Start] → [Programs] → [Connect To] → [Show all connections], and ensure that a [Panasonic Wireless LAN PC Card] icon has been added to the wireless network connections.

Installation of software

For Windows 2000:

1 Click [Wireless LAN Driver] on the screen of Procedure 1 on page 14.

This will activate the installer for wireless LAN

2 Click [Next].

A License Agreement message appears.

3 Click [Yes].

4 Specify the destination for saving the utility and click [Next].

The software is downloaded, and [Digital signature was not found] appears.

5 Click [Yes].

Following the instructions on the screen, go along the steps.

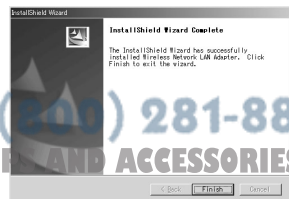
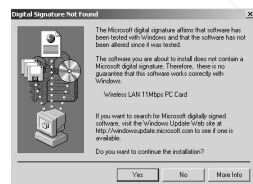
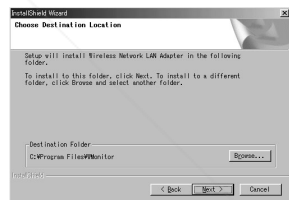
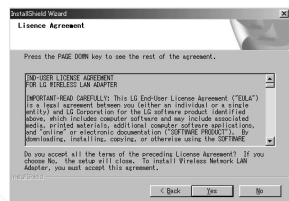
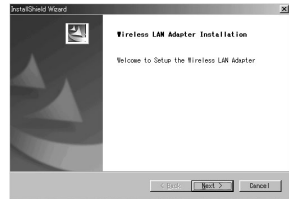
6 Click [Finish].

Installation is complete.

7 Insert an optional wireless card through a CF card adaptor.

(See page 13)

Following the instructions on the screen, go along the steps.

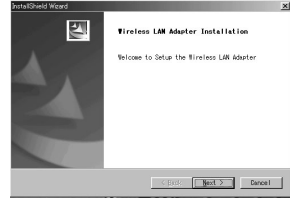


Installation of software

For Windows 98SE/Me:

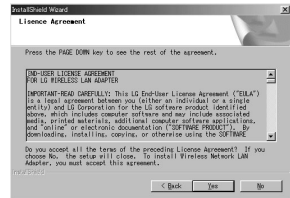
1 Click [Wireless LAN Driver] on the screen of Procedure 1 on page 14.

This will activate the installer for wireless LAN



2 Click [Next].

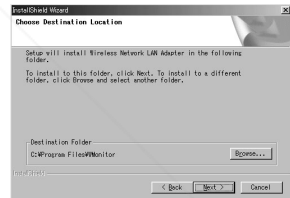
A License Agreement message appears.



3 Click [Yes].

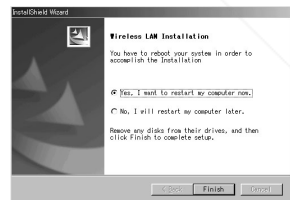
4 Specify the destination for saving the utility and click [Next].

The software is downloaded.



5 Confirm that [Yes, I want to restart my computer now.] is checkmarked and click [Finish].

The personal computer will be rebooted.



6 Insert an optional wireless card through a CF card adaptor.

(See page 13)

If the icon cannot be found, select [Start] → [Program] → [Wireless Network] → [Wireless Network LAN Adapter].



Installation of software

For Windows CE:

Note:

Before starting software installation, enable data communication between the personal computer and Personal Digital Assistant (PDA) via Active Sync

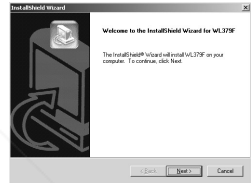
1 In the supplied CD-ROM, go to [Wireless Card], open [Win CE] and then click [setup.exe].

A screen for selection of folder setting language appears.



2 Select [English], click [OK] and click [Next].

A license window appears.



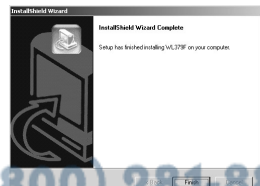
3 Click [Yes].

Following the instructions on the screen, go along the steps.



4 Click [Finish].

As [Unable to connect...] appears on the PDA screen, click [OK].



Discount-Merchant.com (800) 281-8860

THE TRUSTED SOURCE FOR PROJECTOR LAMPS AND ACCESSORIES

5 Insert the optional wireless card (ET-CDWL2E) into PDA.

Wireless Simple Connection (live mode)

When connecting the projector and the personal computer one-to-one by wireless, selection of the Simple Connection mode using the supplied wireless card and the optional wireless card (product No. ET-CDWL2E) will automatically execute IP address, communicate mode, and other necessary settings.

Notes:

- If the abovementioned optional wireless card is not used in your system, Simple Connection is not available with Windows Me/98SE. In addition, the previous network settings cannot be restored with Windows 2000. If your personal computer has already been connected to the network, resetting is required. (See page 30)
- All operations are not guaranteed on all wireless cards or PC-integrated wireless LAN adaptors even with Windows XP.
- Other network adaptors cannot be used when the system is in Simple Connection.

Operations on the projector

1 Insert the supplied wireless card into the projector.

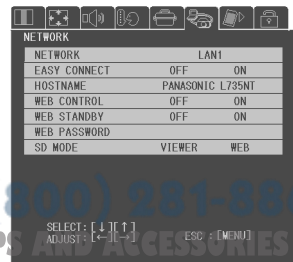
(See page 11)

Use only the supplied card in the projector; other card cannot be used.

2 Turn ON the power supply of the projector.

3 Select [NETWORK] using the [RGB] button.

4 Press the [MENU] button, display the NETWORK SETUP screen using the [◀▶] buttons, and press the [▼] button.



5 Select [Simple Connection] using the [▲▼] buttons and select [ON] using the [◀▶] buttons.

Note:

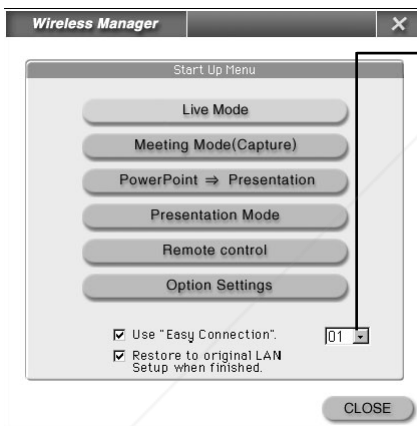
When the network settings are kept in the default conditions, you can skip the above steps 4 and 5.

Wireless Simple Connection (live mode)

Operations on the personal computer

- 1** Insert the optional wireless card into the personal computer. (See page 13)
- 2** Turn ON the power supply of the personal computer.
- 3** Go to [Start] → [All Programs] → [Wireless Manager], and select [Wireless Manager 3.0].

A window appears as shown below.



Specify different numbers to different personal computers. Simple Connection is available to up to 20 personal computers. However, simultaneous use is not possible

- 4** Check [Use Easy Connection] and select [Live mode].

The image on the personal computer screen will be projected on the projector screen.

FixYourDLP.com

Notes: sponsored by [M]

- If [Restore to original LAN Setup when finished] has been checkmarked, the LAN settings before Simple Connection setting will be restored when Wireless Manager 3.0 ends.
- In Windows XP, [Restore to original LAN Setup when finished] cannot be set.

Wireless Simple Connection (live mode)

Releasing the connection to the projector.

■ Temporary releasing

1 Right-click the icon at the right bottom of the PC screen.

A screen appears as shown on the right.



Live
Capture
Presentation
Remote control OPTION
Start Up Menu About
End

2 Click [Live].

This clears the checkmark and changes the colour of the resident icon into blue, releasing the connection.

Double-click on the resident icon will also release the connection.

To resume connection:
Click [Live] again or double-click the resident icon again.
This will give a checkmark, changing the colour of the resident icon into green.

■ Complete releasing

For Windows XP/2000:

1 Right-click the icon at the right bottom of the PC screen.

A screen appears as shown on the right.

2 Click [End].

3 When [You want to quit wireless manager?] appears, execute by selecting [Yes]

If [Restore to original LAN Setup when finished] is checkmarked, the personal computer will automatically restore the previous network settings when quitting the programme. However, it may take some time before returning to the previous network settings.

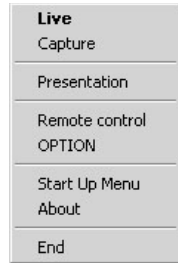
Live
Capture
Presentation
Remote control OPTION
Start Up Menu About
End

Wireless Simple Connection (live mode)

For Windows 98SE/Me:

1 Right-click the icon at the right bottom of the PC screen.

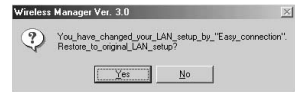
A screen appears as shown on the right.



2 Click [End].

3 When [You want to quit wireless manager?] appears, execute by selecting [Yes]

If [Restore to original LAN Setup when finished] is checkmarked, the personal computer will automatically restore the previous network settings when quitting the programme. However, it may take some time before returning to the previous network settings.



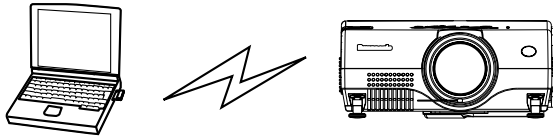
Discount-Merchant.com (800) 281-8860
THE TRUSTED SOURCE FOR PROJECTOR LAMPS AND ACCESSORIES

Network setting

To wirelessly connect the personal computer to the projector without using Simple Connection, network settings are required as described below.

Use of inter-PC communications

■ If the communication mode of 802.11 ad hoc (peer-to-peer) is selected:




Setting item	Settings on the projector (on shipping)	Settings on the personal computer (for Simple Connection)
SSID	Panasonic Projector	Panasonic Projector
Communicate mode	802.11 ad hoc	802.11 ad hoc (peer-to-peer)
IP address	192.168.10.10 - 12 (LAN1 - LAN3)	192.168.10.21 - 40
Subnet mask	255.255.255.0	255.255.255.0
Channel	11	Unnecessary (automatic setting)
WEP (encryption)	None	None

Since the communication mode of 802.11 ad hoc (peer-to-peer) is selected on shipping of the projector, make due settings on the personal computer side with reference to the above data.

To use the WEP functions, make the identical settings both for the projector and the personal computer.

Some wireless cards may not be applicable to this mode; use a card that is compatible to 802.11 ad hoc (peer-to-peer).


FixYourDLP.com
Sponsored by

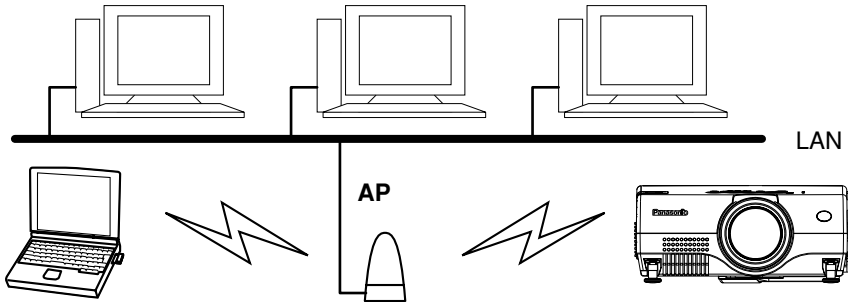
Note:

- The above channel setting of the projector is a default one and is not one which has been designated to connect the projector and PC.

Discount Merchant.com (800) 881-8860
 THE TRUSTED SOURCE FOR PROJECTOR LAMPS AND ACCESSORIES

Network setting

Use of access point (AP)



■ Setting example

Setting item	Settings on the projector	Settings on the personal computer
SSID	Make the same settings as the SSID set for the access point (consult the network administrator).	
Communicate mode	Infrastructure	Infrastructure
IP address Subnet mask	Consult your network administrator for setting	
Channel	Unnecessary	Unnecessary
WEP (encryption)	Make the same settings as the WEP set for the access point (consult the network administrator).	

Notes:

- Select 802.11 ad hoc mode if the system is used in a place outside the radio wave range of the access point.
- For the SSID of the projector, up to 32 alphanumeric characters and signs can be used. Therefore, if any SSID that cannot be set for the projector has been set for the access point, consult the network administrator, and change the SSID to some other code that can be set for the projector.
- The projector is not compatible to the DHCP. For the LAN that uses a DHCP server, it is required to assign a fixed IP address to the projector. For more details, consult the network administrator.

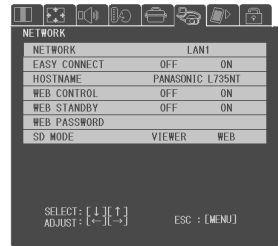
Network setting

Setting up the projector

1 Insert the wireless card into the projector. (See page 11)

2 Press the [MENU] button.

A menu screen appears.



3 Display the NETWORK SETUP screen using the [◀▶] buttons and press the [▼] button.

4 Using the [▲▼] buttons, select the setting item.

■ Network

The projector can store three types of network settings: LAN 1 to LAN 3.

To view network settings:

Select from LAN 1 to LAN 3 using [◀▶] and press [ENTER].

Alter the network settings:

Select the setting item using [▲▼].

NETWORK STATUS	
ID	LAN1
IP ADDRESS	192.168.10.10
SUBNET MASK	255.255.255.0
GATEWAY	192.168.10.1
MODE	802.11 Ad Hoc
SSID	
CH	11
WEP	40 (64)bit
KEY ID	KEY1
FORMAT	HEXADECIMAL
KEY1	*****
KEY2	*****
KEY3	*****
KEY4	*****
OK	CANCEL

IP address:

Using [▲▼•◀▶], select numerals and period ".", press [ENTER], select [Run] and press [ENTER].

- Set an IP address for the projector with reference to the examples of setting.

Note that the same IP address cannot be used as that of the personal computer with which the projector is going to communicate.

Subnet mask:

Using [▲▼•◀▶], select numerals and period ".", press [ENTER], select [Run] and press [ENTER].

- Set a subnet mask for the projector with reference to the examples of setting.

Network setting

Gateway:

Using [▲▼ • ◀▶], select numerals and period, press [ENTER], select [Run] and press [ENTER].

- This is a relay point to connect two networks.
- It is necessary to specify this address when you are to connect to network of different segments or to the Internet in the infrastructure mode or the 802.11 ad hoc (peer-to-peer) mode. Consult the network administrator.

Mode:

Switching between 802.11 ad hoc and infrastructure using [◀▶]

- To use 802.11 ad hoc (peer-to-peer) mode : Select 802.11 ad hoc for setting.
- To use an access point (AP) : Select infrastructure for setting.

SSID:

Use [▲▼ • ◀▶] to select characters, press [ENTER], select [Run] and press [ENTER].

- If infrastructure is selected in communicate mode, use the SSID set for the access point, or the same string as the ESSID.
- If 802.11 ad hoc is selected in communicate mode, use the SSID set for the personal computer to which it is going to be connected, or the same string as the ESSID.
- Use up to 32 alphanumeric characters for the projector SSID. If any SSID that cannot be set for the projector has been set for the access point, consult the network administrator, and change the SSID to some other code that can be set for the projector.

Channel:

This cannot be set. In the 802.11 ad hoc mode and infrastructure mode, the channel is set automatically.

WEP (encryption key size):

Switching among 64 bits, 128 bits and OFF using [◀▶]

- Select the size of the key necessary for encryption communication.
- The size should be consistent with the settings of the personal computer and the access point. Incidentally, 64 bits and 128 bits may sometimes be indicated by 40 bits and 104 bits, respectively.

Key ID (encryption key ID):

Switching among KEY1 to KEY4

Select an ID for the encryption key used. The ID should be consistent with the settings of the personal computer and the access point.

- This specifies which one out of KEY1 to KEY4 to use for encryption.

Network setting

Format:

Switching between hexadecimal and characters using [◀ ▶]

- Use Change the format for WEP key entry.

Key 1 to Key 4:

Using [▲▼ •◀▶], select characters and press [ENTER].

- A hexadecimal digit: Use 10 digits of 0 to 9 and A to F for entry in 64 bits and use 26 digits of the same in 128 bits.
Text: Use 5 alphanumeric characters in 64 bits and 13 characters in 128 bits.
- Use Characters should be consistent with the settings of the personal computer and the access point.

Bringing network settings into effect

Select [Run] and press [ENTER].

■ **Simple connection**

Toggle between ON and OFF using [◀ ▶]

- Use Select ON to use Simple Connection in Wireless Manager.
- If ON is selected, the projector cannot enter the LAN 1 to LAN 3 network setting modes.

■ **Host name**

Using [▲▼ •◀▶], select characters, press [ENTER], select [Run] and press [ENTER].

- Use This defines the name of the projector on the network. Use up to 16 alphanumeric characters.

■ **Web control**

Toggle between ON and OFF using [◀ ▶]

- Use Select ON to control the projector from the browser.

■ **Web power supply**

Toggle between ON and OFF using [◀ ▶]

- Use Select ON to light the lamp of the projector from the browser when the lamp is unlit.
- Use When ON is selected, power consumption will become higher than the normal standby condition.

■ **Web password**

Using [▲▼ •◀▶], select characters, press [ENTER], select [Run] and press [ENTER].

- Use This will be the password to be entered on the top page on which the projector is controlled from the browser.

■ **SD mode**

Switching between Viewer and Web using [◀ ▶]

- Use Viewer: Selection of the SD channel will display thumbnails of image files on the SD card. This mode can be used when the projector operates on a stand-alone basis.
- Use Web: Selection of the SD channel will not display thumbnails of image files on the SD card.
- Use Select Web to perform presentation using the image data on the SD card by controlling the projector from the browser.

Network setting

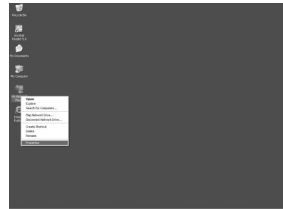
Settings on the personal computer

■ Settings of TCP/IP

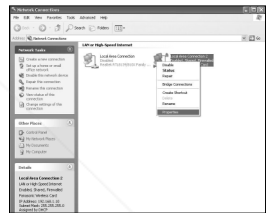
For Windows XP/2000:

An example screen of Windows XP is shown below.

(1) Right-click [My network] and open the Properties.



(2) Right-click [Panasonic Wireless LAN PC Card] and open the Properties.

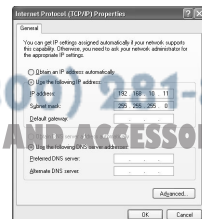


(3) Select the Internet protocol (TCP/IP) and click [Properties].



(4) Enter the IP address of the same segment as the IP address that was set for the projector.

(5) Enter the same value as the subnet mask that was set for the projector, set the gateway (infrastructure mode only), click [OK] and return to the previous screen.



(6) Click [OK].

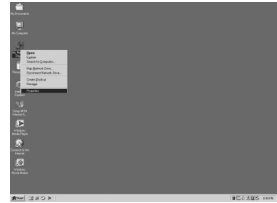
The system will continue to be in action without restarting.

Network setting

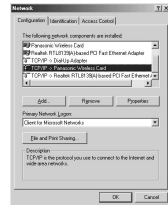
For Windows Me/98SE:

An example screen of Windows Me is shown below.

(1) Right-click [My network] and open the Properties.

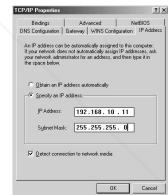


(2) Select [Panasonic Wireless LAN PC Card] and click [Properties].



(3) Enter the IP address of the same segment as the IP address that was set for the projector.

(4) Enter the same value as the subnet mask that was set for the projector.



(5) Set the gateway (infrastructure mode only), click [OK] and return to the previous screen.

(6) Click [OK].



(7) Click [Yes].



Discount-Merchant.com (800) 91-3860
THE TRUSTED SOURCE FOR PROJECTOR LAMPS AND ACCESSORIES

Network setting

For Windows CE:

The diagram below shows an example screen of Personal Digital Assistant (PDA). However, different screens may be found depending on manufacturers and models: typical settings when the projector is just shipped from the factory or when Simple Connection is turned ON.

- (1) On a PDA, go to [Settings] → [Connect To] → [Network adaptor], then select [Gemtek Wireless LAN PC Card] and click [Properties].
- (2) Check [Use specified IP address] and set the address of the same group as the projector.
- (3) Set IP address to [192.168.10.20] and set subnet mask to [255.255.255.0] and click [OK].
- (4) If the projector uses WEP (encryption), go to [Start] → [Settings] → [System] → [Wireless Settings] and select [Encryption].
- (5) Change Encryption (WEP) from “Disabled” to 64 bits or 128 bits. Checkmark “Create Keys Manually”, enter the same WEP key as the projector in hexadecimal (0-9, A-F) into Key 1 and click [Apply].
To enter WEP settings of the projector with characters, use hexadecimals with reference to the ASCII code table on the next page.



Discount-Merchant.com (800) 281-8860
THE TRUSTED SOURCE FOR PROJECTOR LAMPS AND ACCESSORIES

Network setting

		30	0	40	@	50	P	60	`	70	p
21	!	31	1	41	A	51	Q	61	a	71	q
22	"	32	2	42	B	52	R	62	b	72	r
23	#	33	3	43	C	53	S	63	c	73	s
24	\$	34	4	44	D	54	T	64	d	74	t
25	%	35	5	45	E	55	U	65	e	75	u
26	&	36	6	46	F	56	V	66	f	76	v
27	'	37	7	47	G	57	W	67	g	77	w
28	(38	8	48	H	58	X	68	h	78	x
29)	39	9	49	I	59	Y	69	i	79	y
2a	*	3a	:	4a	J	5a	Z	6a	j	7a	z
2b	+	3b	;	4b	K	5b	[6b	k	7b	{
2c	'	3c	<	4c	L	5c	≠	6c	l	7c	
2d	-	3d	=	4d	M	5d]	6d	m	7d	}
2e	.	3e	>	4e	N	5e	^	6e	n	7e	~
2f	/	3f	?	4f	O	5f	—	6f	o		



FixYourDLP.com

Sponsored by DM

Discount-Merchant.com (800) 281-8860

THE TRUSTED SOURCE FOR PROJECTOR LAMPS AND ACCESSORIES

Network setting

■ Settings for use of optional wireless card (ET-CDWL2E)

For Windows XP:

No dedicated utility software is required. For details, see the manual for Windows XP.

- (1) Turn ON the power supply of the projector.
- (2) Go to [Start] → [Programs] → [Connect To] → [Show all connections] and select [Wireless network connection].
- (3) Right-click the [Panasonic Wireless LAN PC Card] icon and select [Show available wireless networks].
A wireless network connection screen will appear.
- (4) From the [Available wireless network] list, select the SSID (Panasonic Projector is selected on factory shipping) of the projector and click [Connect To].

Notes:

- Enter the information of WEP key (entry with characters) in [Network key] before clicking [Connect To] if encryption (WEP settings) has been set. (“No WEP” is selected on factory shipping)
- To confirm the detailed settings of the network, click the [Wireless network settings] icon on the network connection screen.



Discount-Merchant.com (800) 281-8860
THE TRUSTED SOURCE FOR PROJECTOR LAMPS AND ACCESSORIES

Network setting

For Windows 2000/Me/98SE:

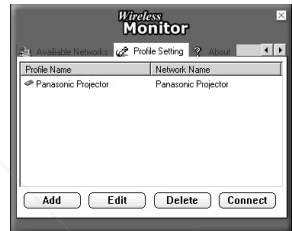
Notes:

Do not use the utility software when the system is in Simple Connection. Using it may cause some problem in connection with the projector.

- (1) Double-click the resident icon at the right bottom of the PC screen.
This activates the utility software.



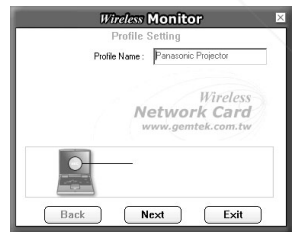
- (2) Click the item of [Profile Setting] and click [Add].



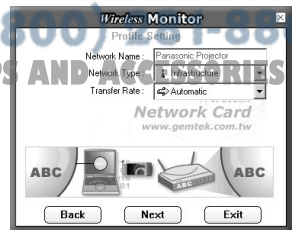
Note:

To alter any set information, select the set name for alteration with the mouse and then click [Edit].

- (3) Enter the set name of the network, click [Next] and enter the network name (the SSID of the projector with which you want to make connection; selection on factory shipping is Panasonic Projector).



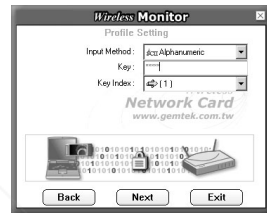
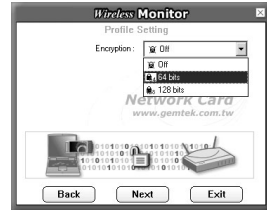
- (4) Select the communicate mode, select [Automatic] for communication speed and click [Next].



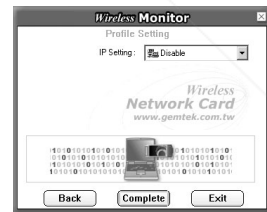
Network setting

Notes:

- The communicate mode is not compatible with the ad hoc mode. Select either peer-to-peer (802.11 ad hoc) or Access Point (infrastructure).
- Some other cards than the optional item (ET-CDWL2E) are compatible only with ad hoc mode. Such cards cannot be used.
- To make setting for encryption (WEP), select 64 (40) bits or 128 bits from [Off] and click [Next]. If you do not want to use it, select [Off].
- The user may select characters or hexadecimal for WEP entry.
 Character entry: five characters in 64 (40) bits and ten characters in 128 bits.
 Hexadecimal entry: use 0-9 and A-F in 10 figures and 20 figures, respectively.
- The WEP key should be consistent with the settings on the projector side; do not change the default key of "1".

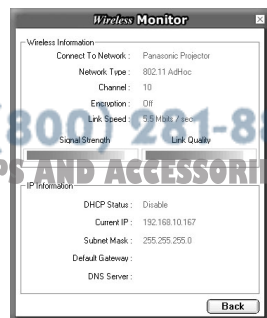
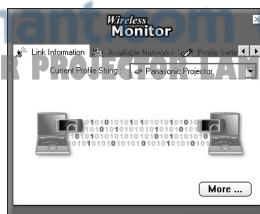


(5) Select [Disable] for [IP Setting] and click [Complete].



Note:

The state of linking indicates the condition of connection with the projector. Click [More...].



Network setting

For Windows CE:

The diagram below shows an example screen of Personal Digital Assistant (PDA). However, different screens may be found depending on manufacturers and models: typical settings when the projector is just shipped from the factory or when Simple Connection is turned ON.

- (1) On a PDA, go to [Start] → [Settings] → [System], and select [Wireless Settings].

Note:

If [Wireless Settings] does not appear, make PDA hard reset.

- (2) Set Mode to [802.11 Ad Hoc] and set SSID to [Panasonic Projector] and click [OK].



Discount-Merchant.com (800) 281-8860
THE TRUSTED SOURCE FOR PROJECTOR LAMPS AND ACCESSORIES

Use of Wireless Manager 3.0

Start-up

Go to [Start] → [All Programs] → [Wireless Manager], and select [Wireless Manager 3.0]

Select the function you want to use in the window when it appears as shown below.



Notes:

- If [Use Simple Connection] has been checkmarked, setting of the IP address for the personal computer, the SSID for the wireless LAN, communicate mode and other options will be automatically carried out. When a down list appears on the right, select different numbers for computers if you use two or more personal computers.
- If [Restore to original LAN Setup when finished] has been checkmarked, the LAN settings before Simple Connection are restored when Wireless Manager ends if Simple Connection is used. However, in Windows XP, this check box does not appear. If [Use Simple Connection] has not been checkmarked, [Restore to original LAN Setup when finished] does not appear.

Live mode

Images on the personal computer screen are directly transferred to the projector. Since a single personal computer occupies the projector in this mode, the wireless card does not allow other personal computer(s) to connect to the projector.

■ Selecting the transfer mode

Right-click the resident icon at the right bottom of the PC screen, go to [Option], and select [Live settings]. Four modes are available for selection: [Normal mode], [Natural pictures mode], [Fast mode], and [High quality mode]. [Normal mode] is selected on factory shipping.



Use of Wireless Manager 3.0

■ In live mode

The colour of icon changes to green from blue, which is normal, and a checkmark is given to “Live mode” of the task tray.

■ Quitting and resuming live mode

Click “Live mode” on the task tray. It toggles between Quit and Resume. Alternatively, double-clicking the resident icon will help you do this.

Note:

The display speed in live mode depends on the CPU performance of the personal computer. If the display speed is too slow, select another transfer mode, or use a personal computer with superior CPU performance.

Meeting mode (screen capture)

Images on the personal computer screen are captured and images are transferred to the projector.

This mode allows the user to send images from two or more personal computers without switching the connection of wireless card. In addition, checkmarking [Save image] in optional setting will allow the user to use a once captured image for projection more than once in presentation mode.

Capture mode

[Full screen]:


The entire screen image of the personal computer will be captured and displayed in PictureBox.

[Region]:

Part of personal computer screen (rectangular region) will be cut and captured.

[]:

This allows the user to select and capture one of windows displayed on the PC screen.

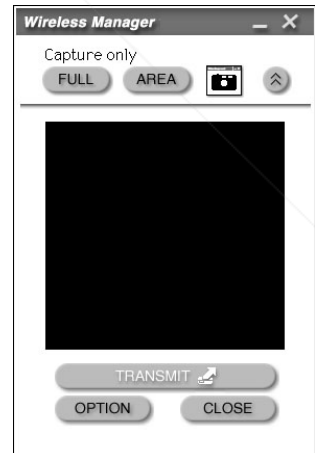
To do this, drag and drop the [] icon onto the window that you want to capture.

[]:

This button is for changing full display. Every press on this button changes the screen size.

[Option]:

Press this icon and a screen will appear for different settings of screen capture (acquisition).



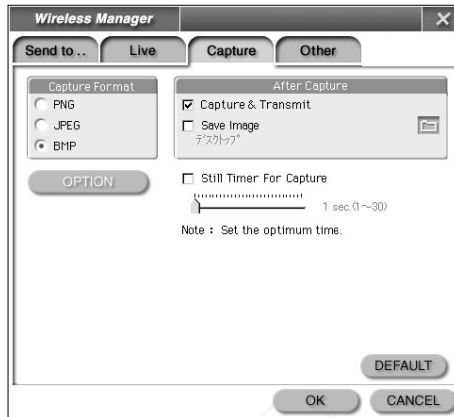
Note:

If [Capture and send image] is checkmarked in option, the image will be transmitted to the projector simultaneously with image capture.

Use of Wireless Manager 3.0

■ Selection of capture format

This function allows selection of format when the image is captured.



[PNG]:

The image quality is not deteriorated, but this format is not suitable for natural pictures.

[JPEG]:

This compression format is suitable for natural pictures. However, this is not suited to images that contain many characters because of remarkable quality deterioration. Further, only JPEG allows the user to adjust the image quality optionally.

[BMP]:

This format does not use compression, and the size of image data becomes extremely large.

■ Operations after image acquisition


If [Capture and send image] is checkmarked:

The PC screen image is transmitted to the projector when it is captured.

If [Capture and send image] is not checkmarked:

No other operations are executed than image acquisition

If [Save image] is checkmarked:

Captured image data will be saved in the specified folder. The [] button allows the user to change the destination folder.

■ Setting of capture delay time

If your personal computer is too low in its ability, sometimes the PC screen image may not be captured successfully. In such cases, adjust the delay time to the optimal level. However, no need for this adjustment, normally.

Progress bar:

The bar chart indicates the progress while the image is transferred to the projector.

Use of Wireless Manager 3.0

"PowerPoint ⇒ Presentation" mode

This function converts PowerPoint files (*.ppt) into image files so that they may be transmitted to the projector.

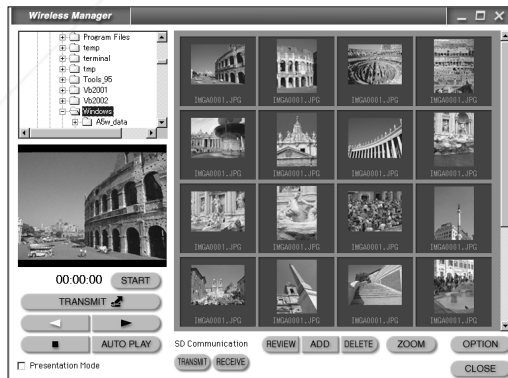
From startup menu, execute [PowerPoint ⇒ Presentation mode], and a [Drag and drop a PowerPoint file (*.ppt) here] message appears. Drag and drop the desired PowerPoint file to the specified point on the screen.

Specify the destination folder for file saving, and this will automatically start conversion into an image file. When all conversion is complete, a screen of presentation mode appears. Here the user may check the list of converted PowerPoint files.

For further operations, see the instructions on the presentation mode.

Presentation mode

When the user specifies a folder name in the folder selection at the left top, the images in the folder will be listed in thumbnails if the folder contains image file(s) (JPEG, PNG). If the system is in "PowerPoint → Presentation" mode, the folder(s) of converted images will be automatically selected.



■ **Setting of capture delay time**
If your personal computer is too low in its ability, sometimes the PC screen image may not be captured successfully. In such cases, adjust the delay time to the optimal level. However, no need for this adjustment, normally.

Use of Wireless Manager 3.0

■ Presentation mode

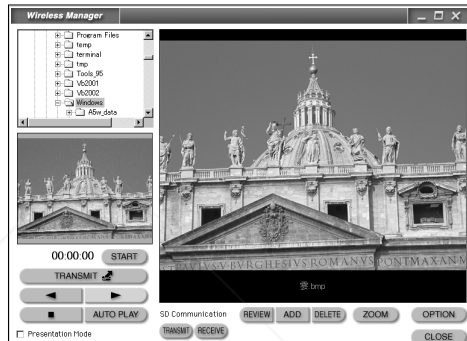
Check [Presentation mode] and press the [Send] button.

When an image is sent, the next image will be automatically selected. In addition, images can be changed over without delay of time because the next image has been sent to the projector in advance. Furthermore, the projector cannot be connected by other personal computers because it is already monopolized.

■ Progress bar

The bar chart indicates the progress while the image is transferred to the projector.

■ Switching display mode



Press the [ZOOM] button, and the image being projected on the projector screen will be displayed by full image in the larger frame (i.e., the thumbnail viewing frame) on the right and the next image will be displayed on the smaller preview screen on the left.

Add:

This function allows the user to add images from different folders. Added images will be placed to the last of the series of images in the thumbnail viewing frame.

Delete:

The user can delete the image(s) selected in the thumbnail viewing frame.

Note:

Deleted image files exist in the recycle bin of the personal computer. Accidentally deleted files can be retrieved from the recycle bin.

Change of sequence:

Images can be replaced in the sequence by drag and drop operation in the thumbnail viewing frame.

Use of Wireless Manager 3.0

Re-display:

This function updates images to the list of the latest thumbnail images. If any image in a folder has undergone edit by Explorer etc., for example, the re-display button will reflect the result in the thumbnail viewing frame.

Automatic play:

This function will project the images in the folder one after another at constant time intervals in turn from the first one to the last.

Automatic play starts with the currently selected thumbnail image. During automatic play, the [Automatic play] button changes into a [Pause] button. When the [Pause] button is pressed, the next image remains selected for transmission. However, if the [Stop] button is pressed, the display sequence will be refreshed to the top image in the folder.

During automatic play, too, other personal computers cannot connect to the projector because the projector is monopolized.

In addition, the user may make settings of image display interval and loop times (display times) by going to [Option] → [Others].

Timer:

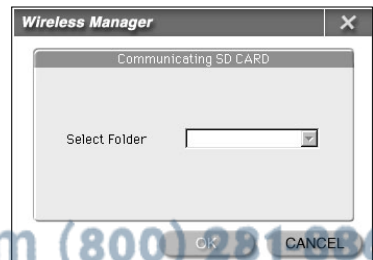
Every press on the [START] button will change the function in turn as: [START] → [STOP] → [RESET]. [START] activates the timer, [STOP] suspends the timer, and [RESET] clears the timer to "0". The user can use this function to check the elapsed time in presentation for reference.

Communication with SD

([TRANSMIT], [RECEIVE]):

This function enables the user to transmit all images in the folder of the personal computer to the SD Memory Card set in the projector, or inversely, to retrieve images in the specified folder on the SD Memory Card from the personal computer.

When images are received, image data will be saved in the selected folder in the presentation mode window.



Note:

Do not turn OFF the power to the projector main unit or remove the SD Memory Card from the main unit when the system is in communication with the SD Memory Card. Doing this may not only destroy the data, but also damage the SD Memory Card itself.

Use of Wireless Manager 3.0

Other functions

■ Searching projector

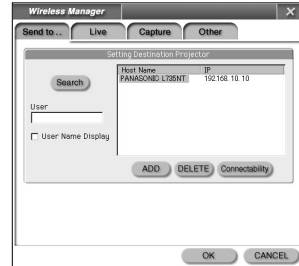
This function is not required when Simple Connection is used. The function becomes necessary when Simple Connection is not used or if two or more projectors are used.

Go to [Option] and specify the projector in [Selection of projector].

[Search]:

The user can use this function to search the projectors that are available for connection. However, projectors subject to search are limited to those within the same network.

Projectors that are not powered cannot be searched.



■ Registering projector

Once a projector is registered, the next time the user can omit the procedure to connect to the same projector.

If Simple Connection is used, the projector will be automatically registered. If Simple Connection is not used, connection will be made to currently registered projector.

If two or more projectors have been registered, the one at the top in the registration (or the projector connected on the previous occasion) will be specified the first for connection. If any projector is not detected by the search, the user may use the [Add] button to directly enter the IP address of the projector.

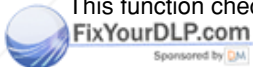
The host name to identify the projector will be automatically sent from the projector and displayed. The host name should be set on the projector side.

■ Deleting projector

This function deletes the specified projector from the registration.

■ Confirming connection

This function checks the condition of connection to registered projectors.



Discount-Merchant.com (800) 281-8860
THE TRUSTED SOURCE FOR PROJECTOR LAMPS AND ACCESSORIES

Use of Wireless Manager 3.0

■ Displaying the sender, sender's name

Checkmark [Show the sender] and enter the name in [Sender].

In meeting mode, the entered [Sender's name] will be shown in combination at the right bottom of image sent to the projector. The above information is not displayed in live mode or in presentation mode. If [Presentation mode] is not checkmarked in presentation mode, the information is displayed on each image transmission.

■ Setting a shortcut key

Go to [Option] and select [Others].

[Live mode]:

This function turns ON/OFF the live mode.

[Full screen transmission]:

This function transmits the entire image on the PC screen to the projector.

[Presentation]:

Displays a presentation screen.

[Capture]:

Displays a capture screen.



Note:

The screen of Wireless Manager 3.0 must be activated when using the shortcut key. Note that, if any other application is running at the same time, and when the set shortcut key is also used by that application, then this function works in a totally different way.

■ Setting automatic play

See the section of automatic play of “presentation mode”. (See page 43)



■ Setting Simple Connection

When Simple Connection is used, the user may disable the screen saver. If the system hangs up due to any anomaly during Simple Connection, the user can press the [Restore] button to bring the network settings into the previous state. However, this cannot be guaranteed against all abnormal conditions.

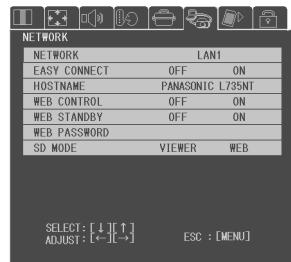
Use of Web browser control

Browsing software (Internet Explorer etc) can be used to access the projector and remote-control the projector from the personal computer, or to control the SD Memory Card inserted in the projector.

Settings on the projector

1 Press the [MENU] button

2 Using the [◀▶] buttons, display the network settings screen.



3 Press the [▼] button.

It is possible to change the settings using the [▲▼•◀▶] buttons.

When alteration is complete, press the [ENTER] button.

■ Web control

ON: enables Web browser control.

OFF: disables Web browser control.

■ Web power supply

ON: enables to turn on the lamp of the projector by Web browser control when the system is on standby.

OFF: disables to turn on the lamp of the projector by Web browser control when the system is on standby.

Use the POWER button of the projector or remote control to light the lamp.

■ Web password

Set a password within 16 alphanumeric characters. No password is set on factory shipping.

When the personal computer accesses the projector, the password will be queried. Then enter the password that was entered here.

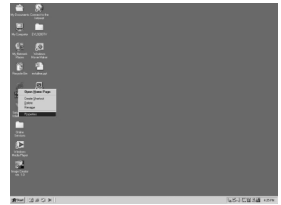
Using [▲▼], select the [Web] password, and press [ENTER], and a software keyboard will appear.

Use of Web browser control

Settings on the personal computer

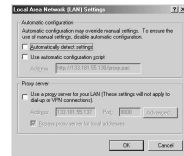
1 Right-click the [Internet Explorer] icon.

This opens Properties.



2 Go to [Connect To], open [LAN settings], clear the checkmark on "All options", and click [OK].

Then the setting screen will be closed.



Notes:

- If Simple Connection is used, settings will be made automatically. (Internet Explorer Ver.6.0 or superior is needed, though)
- If a proxy server is already used, set the IP address of the projector to which connection is made as an exception for not using a proxy server in [Advanced].

3 In "Security", set the security level to the "Default level". Or otherwise, from "Custom level" enable "Active script"..



Discount-Merchant.com (800) 281-8860

THE TRUSTED SOURCE FOR PROJECTOR LAMPS AND ACCESSORIES

Note:

For Netscape, go to [Edit] → [Setting] → [Details] and enable JavaScript.

Use of Web browser control

Operation of Web browser control

Starting Web browser control

Start the browser (Microsoft Internet Explorer is used as an example here), and enter the IP address assigned to the projector.

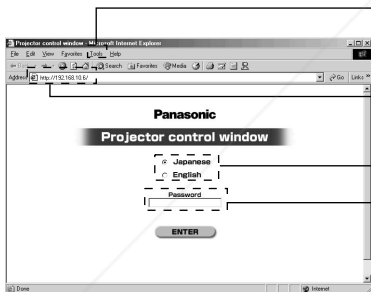


Web browser control will be started.

Note:

Web browser control can also be started from Wireless Manager 3.0. While Wireless Manager 3.0 is running, right-click the icon shown on the task bar, select and left-click Remote Control. The Web browser control can also be started by pressing the [CTRL] + [H] buttons at the same time.

■ Top screen



Make setting so that the proxy server will not be used.

(To use the proxy server, see page 47.)

Specify the IP address that has been assigned to the projector in the network setting.

Select Japanese or English.

Enter the password if any has been defined.

FixYourDLP.com

Note: Sponsored by

• In case you forget the password, assign a new password to the projector (For security reason, the projector does not show the password that you have been using).

• The top screen may not be displayed depending on the browser. In that case, close the window first and start again the Web browser control, or press the [CTRL] + [R] buttons at the same time.

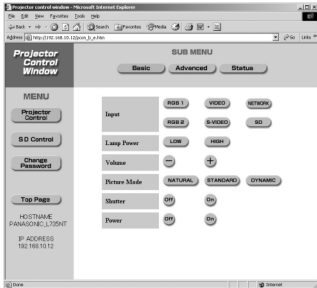
Use of Web browser control

Projector control

Click "Projector control" in the menu.

The user can make various settings of the projector.

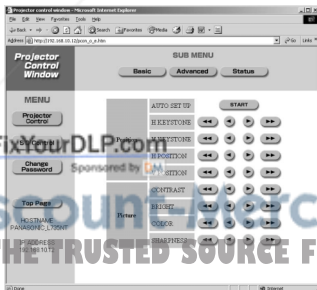
Basic control screen



Notes:

- If the power supply has been turned ON, the screen will be closed for a moment. Confirming the lamp is lighting, then enter into the top screen again.
- It may happen that connection to the projector is unsuccessful immediately after the power is turned ON. Then, wait for a moment and try connection again.
- If Web control is not set to ON in the network setting of the projector, either basic control or option control will not operate.
- If Web power is not set to ON in the network setting of the projector, the action of turning ON the power will not be performed. However, the projector control screen will provide the same display as that when normal operation is possible.

Option control screen



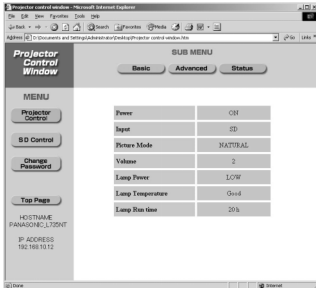
Note:

Monitor information is updated at regular intervals. If you go to "Display" and press the "Refresh" button, you can check the current and accurate information.

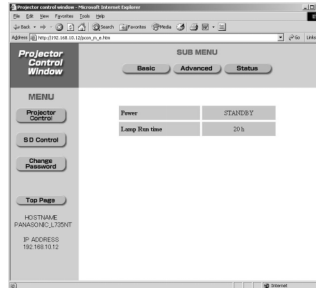
Use of Web browser control

■ Monitor information screen

When power is turned ON:



When the system is in Web standby state:



Note:

Monitor information is updated at regular intervals. If you go to "Display" and press the "Refresh" button, you can check the current and accurate information.



Discount-Merchant.com (800) 281-8860
THE TRUSTED SOURCE FOR PROJECTOR LAMPS AND ACCESSORIES

Use of Web browser control

SD control

Note:

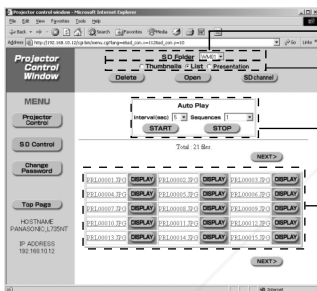
To control SD Memory Card with the Web browser control of the projector, go (on the projector) to [On-screen menu] → [Network settings], set [WEB control] to ON, and set [SD mode] to Web (set to Viewer on shipping).

1 Switch to "SD CARD" by using the input selector (RGB) button of the projector or the remote control.

It is also possible to switch to it on the basic control screen of the projector control.

2 Click "SD control" in the menu.

■ SD file list screen



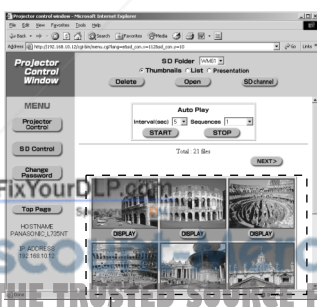
Select a folder in the SD card.

Select from display of thumbnail, display of file name list and presentation.

Control auto-play.

Clicking a file name will zoom in on it within the Web browser.
Clicking Projection will display the file.

■ SD thumbnail screen



Clicking an image will zoom in on it within the Web browser.
Clicking "Projection" will display it on the projector.

Note:

If the thumbnail screen is not renewed, check the following settings and reset them when the settings are not correct.

• Internet Explorer

Select [Tool] → [Internet option] → [Setting] of the temporary Internet file and check that [Confirm automatically] is checkmarked.

• Netscape

Select [Edit] → [Setting] → [Detail] → [Cache] → [Comparison between the page of Cash and the one on the network] and check that [When the page is out of time] is checkmarked.

Use of Web browser control

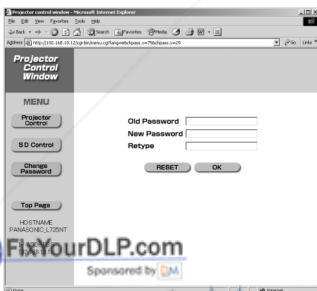
■ Presentation screen



Click the page, so the image will be magnified in the Web browser and projected on the projector screen.

■ Changing password

Click "Change password" in the menu.



Discount-Merchant.com (800) 281-8860

Note: TRUSTED SOURCE FOR PROJECTOR LAMPS AND ACCESSORIES
Up to 16 characters can be used for a password.
Use alphanumeric characters and symbols to create a password.
Both upper and lower case letters can be used.

Use of Web browser control

Using a PDA

From a personal digital assistance (PDA) and other portable information terminal, the user can access this projector to make setting on the projector and to operate data of the SD card.

For settings of PDA and the network card for PDA, see the instruction manual for that device.

■ Starting the Web browser control (PDA)

Start the browsing software and enter the following address:

http://(the IP address set by the projector)/index_p.htm

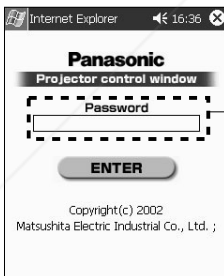
Then the Web browser control (PDA) will start.

Note:

Explanation made here uses a PDA, pocket Internet explorer 3.0, for example, with the screen size being 240 wide and 320 long.

■ Top screen

If a password has been set, enter it and press ENTER.



Enter the password if any has been defined.



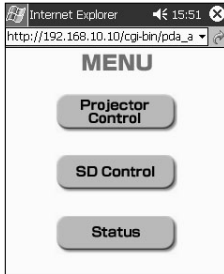
Note:

In case you forget the password, assign a new password to the projector (For security reason, the projector does not show the password that you have been using).

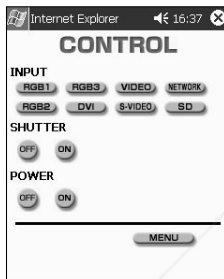
Use of Web browser control

■ Menu screen

Press [Projector Control], [SD Control] or [Status].



■ Projector Control



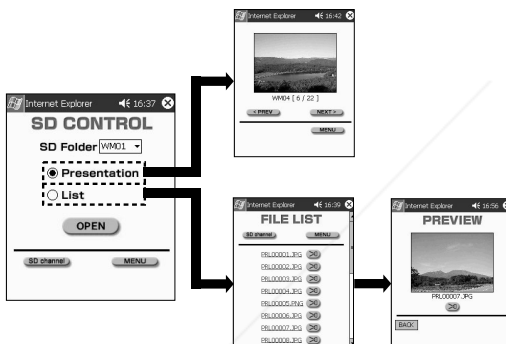
Notes:

- When the power is turned ON, confirm that the indicator lamp is lighting, then go to the top screen again.
- Immediately after power turning ON, it may happen to be unable to connect with the projector. If this is the case, wait for a while and then try connection again.
- Either basic control or option control will not function unless Web power is set to ON in the option setting of the projector.
- Power ON operation will not occur unless Web power is set to ON in the option setting of the projector. At this moment, however, the projector control screen has the same indications as those displayed when normal operation is available.

Use of Web browser control

■ SD Control

- (1) Switch to “SD CARD” using the input switching (RGB) button on the projector or the remote control.
This switching can be made also on the screen of the projector control.
- (2) Click “SD control” of the menu.
- (3) Select from folders in the SD card.
- (4) Select form control modes (presentation and list).



Presentation

The NEXT button will project the next image and the PREV button the previous image.

List

A list of files that can be replayed will appear. Press the button located at the right of the desired file for replay, and the image will be projected.

■ Status

When power is turned ON:

When the system is in Web standby state:

Hostname	PANASONIC_L735NT
Power	ON
Input	SD
Lamp Run time	20 h
Lamp	Good
Temperature	Good
Lamp Power	LOW

Hostname	PANASONIC_L735NT
Power	STANDBY
Lamp Run time	20 h

Note:

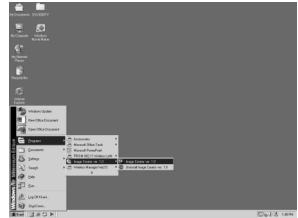
Although the Status information is updated at constant intervals, pressing the update button of the Web browser will display the current information.

Use of Image Creator 1.0A

Starting/ending Image Creator 1.0A

■ Start-up

From the [Start] menu at the left bottom of the screen, go to [All Programs] → [Image Creator], and select [Image Creator 1.0A].

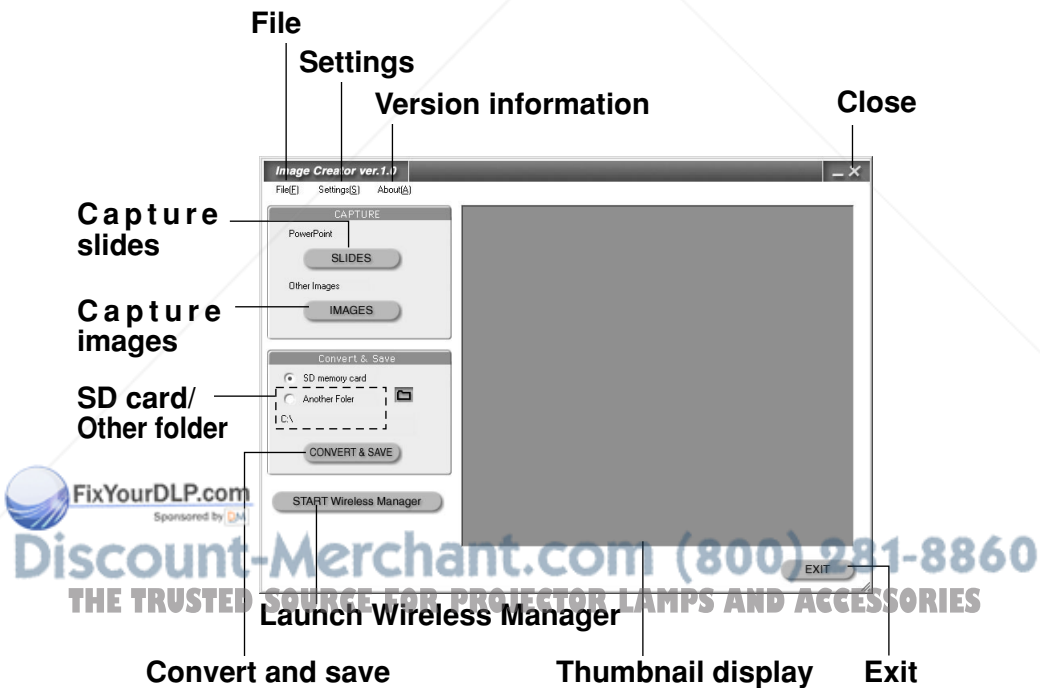


■ End

Click [Exit] on the operation screen.

Functions on the main screen

Activate Image Creator 1.0A, and the main screen will open. Function of each part of main screen is illustrated in the diagram below.



Use of Image Creator 1.0A

"File" menu

"Capture slides", "Capture an image", "Convert and save" and "Exit" are available in this menu.

"Settings" menu

This menu allows you to use change of "JPEG conversion format" (saving in DCF format, making thumbnails) and adjust of "JPEG quality" (low-quality or high-quality).

"Version information"

You can check the version of "Image Creator 1.0A software".

"Capture slides" button

Presentation files created with Microsoft PowerPoint are captured into Image Creator 1.0A.

"Capture images" button

Image files created with other applications (either in JPEG, BMP, TIFF, PNG format) are captured into "Image Creator 1.0A".

"SD card/Other folder" selection

Here select the destination of captured image files.

"Convert and save" button

The destination folders for saving selected in [SD Memory Card / other folders] will be subjected to format conversion (automatic, JPEG and PNG conversion) and size conversion, and then files are saved.

"Launch Wireless Manager" button

Wireless Manager 3.0 will be started.

(Once it is started, it will be minimized on the task bar. To operate the function, right-clicking the icon with the mouse.)

If images are saved using Image Creator 1.0A in advance, then a series of steps will be performed, including: startup of Wireless Manager 3.0; display of the presentation mode window; and up to thumbnail display of images saved by Image Creator 1.0A. However, the presentation mode window may not be displayed if Wireless Manager 3.0 has been activated.

Thumbnail display

The images captured into Image Creator 1.0A are displayed in reduced size. They can be sorted or deleted by right clicking with the mouse.

"Exit" button

Quits Image Creator 1.0A.

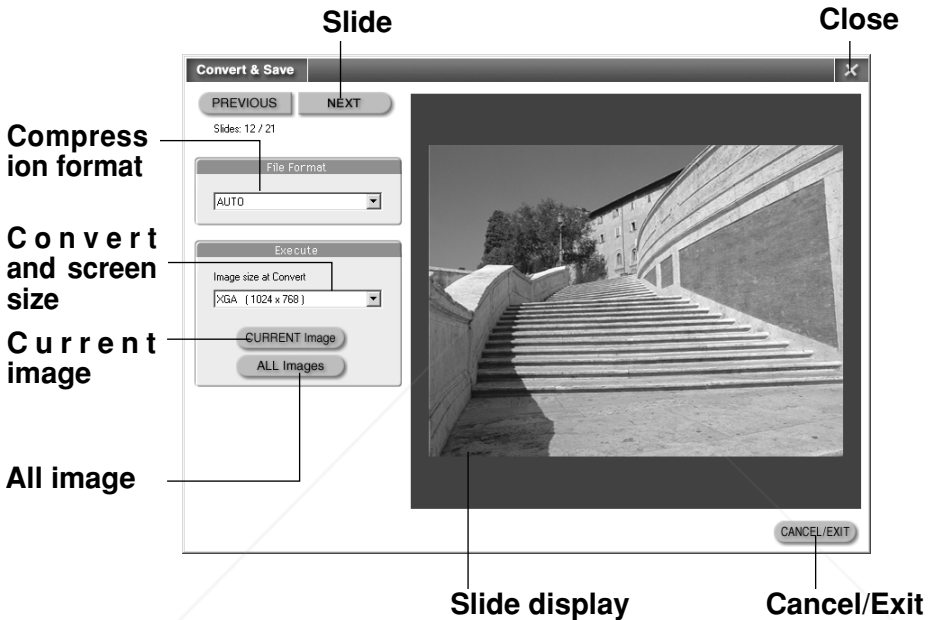
"Close" button

Quits Image Creator 1.0A.

Use of Image Creator 1.0A

Converting and saving captured images

Click [Convert and save] on the main screen.
A setting screen appears.



Use of Image Creator 1.0A

"Slide" button

This button switches the display of image files captured into Image Creator.

"Compression format" setting

This button changes the displayed image files captured by Image Creator 1.0A.

Note:

In the AUTO mode, an optimum compression format will be selected automatically according to the image.

"Convert and screen size" setting

Specify the screen size of the file to be saved.

"Current image" button

Currently selected image file will be saved in the specified compression format and screen size onto the SD card or into other folders. The name of the saved file will be generated automatically.

"All image" button

All image files captured into Image Creator are saved in the specified compression format and screen size onto the SD card or into other folders. The name of the saved file will be generated automatically.

Slide display

The currently selected image file will be displayed.

"Cancel/Exit" button

This button stops converting and saving process and closes the screen. If you press this button when converting or saving is in progress, the remaining process will be stopped and the screen will be closed.

"Close" button

This button stops converting and saving process and closes the screen. If you press this button when converting or saving is in progress, the remaining process will be stopped and the screen will be closed.

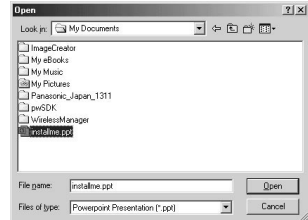


Discount-Merchant.com (800) 281-8860
THE TRUSTED SOURCE FOR PROJECTOR LAMPS AND ACCESSORIES

Use of Image Creator 1.0A

Capturing presentation files created with Microsoft PowerPoint97/2000/2002

- (1) Press the [Capture slide] button and select your desired presentation files, so an [Open] windows will appear. In the [File location] menu, or using the folder icon, move to the location in which your desired presentation files for conversion exist. Select the presentation files and press the [Open] button.



Note:

Only presentation files saved in PPT format (with a .ppt extension) can be captured. A file saved in other format (e.g. a file with a .pps extension) should be opened with PowerPoint and saved in PPT format.

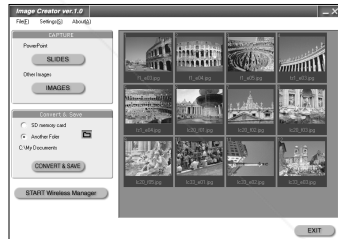
- (2) Press "Convert and save" button to save the captured image files onto the SD card or other folders.

To capture all slides in the presentation file:

Press the [Capture all] button.

To capture only desired slides one by one:

Press the [Previous slide] or [Next slide] button to view the desired slide, and then press the [Capture] button. Press the [Stop/End] button when all captures are complete.



Notes:

- Press the "Cancel/Exit" button if you want to stop the process of "Capture all".
- All captured slides are converted so that the aspect ratio will be 4:3. Slides with other aspect ratio than 4:3 will not be reproduced in correct image.
- Some slides created with PowerPoint97 may cause an error during their converting process. If this occurs, you can solve the problem by converting the slides with the PC that has PowerPoint2000 installed.
- If image files are pasted in combined PowerPoint 97 and Windows 98, normal conversion is not available.

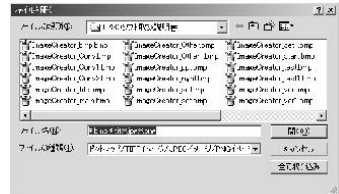
Use of Image Creator 1.0A

Capturing JPEG, BMP, TIFF or PNG files created with other applications

■ Press the "Capture image" button

On the file search window, select your desired image files for conversion and press the [Open] button.

Press the [Capture all] button, and all image files in the currently open folder will be captured.



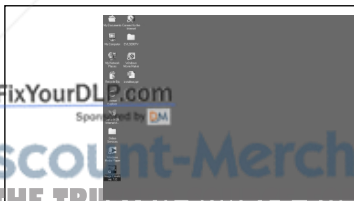
■ Images not to be captured

The following images cannot be read even if they are in JPEG, BMP, or TIFF format:

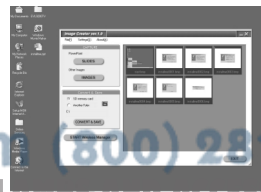
- Images with more than 10,000 dots vertically or horizontally.
- BMP images compressed in RLE format
- TIFF images compressed in LZW format
- JPEG or TIFF images in CMYK (Cyan, Magenta, Yellow and Black).
- Images compressed in JPEG2000

■ Capturing files by drag-and-drop operation

"Image Creator 1.0A" supports drag-and-drop operation. When you choose a file or a folder to be converted and drag and drop it on the shortcut icon or the window of the application, Image Creator 1.0A starts automatically and the file(s) are captured.



Drag and drop onto the shortcut icon.



Drag and drop into the window.

Use of Image Creator 1.0A

■ Sorting images

Drag the desired image to the desired spot and drop the image.

A green bold line is shown vertically between images. Release the mouse button on the desired location, and the image will move there.



Note:

Alternatively, the following steps may be taken:

Right-click to select [Sort...] in the submenu and move images on the [Sort images] setting screen.

■ Deleting images

(1) Select images for deletion

While pressing the [CTRL] key, repeat clicking:
Two or more image can be selected.

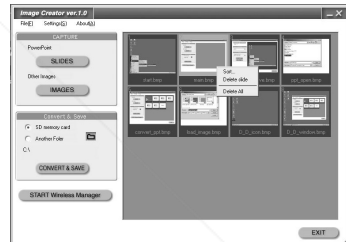
While pressing the [SHIFT] key, click:
All images between two images can be selected.

(2) Right-click to display submenu and select [Delete from list].

If you choose "Delete all images from the list", all captured images will be deleted.

(3) Click "Yes" when a confirmation window is displayed.

The images will be deleted from the thumbnail display.



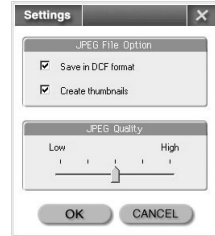
Note:

The original images will not be deleted even captured images are deleted.

Use of Image Creator 1.0A

■ Make conversion settings when writing an image.

You can specify how to convert images when saving images onto the SD card or into other folders on the "Setup screen" displayed by choosing "Setup" from the "Setup" menu or on the "JPEG quality" adjustment slide bar on the main screen.



"JPEG conversion format" check box

If you select this check box with , the file and directory names will be converted into DCF format upon saving. If the mark is not given, files will be saved in the name shown under each image on the thumbnail screen.

For details of DCF standard, refer to "DCF standard" on page 65.

Note:

When a file is saved onto the SD card, it is forcefully converted into DCF format.

"Create a thumbnail" check box

If you select this check box with , a reduced image (i.e., a thumbnail) will be created in JPEG format and embedded into the image file upon saving.

Note:

When a file is saved onto the SD card, a thumbnail is forcefully created.

"JPEG quality" adjustment slide bar

You can adjust the quality (compression ratio) of a JPEG image to be saved using "Save to the SD card" or "Save to the other folder" button.

If you choose higher quality, a file becomes larger; if you choose lower quality, a file becomes smaller. (The size of the lowest quality file is about one fifth of that of the

Highest Quality)

Sponsored by

Note:

The JPEG format is suitable for natural pictures such as photographs. For presentations created with PowerPoint and illustrations made with graphic software, there may be significant loss of picture quality even if you choose a higher quality.

Use of Image Creator 1.0A

Saving to other folder (directory)

With the "Save to other folder" button, you can save captured images onto the hard disk of your PC or onto MO disk or others.



Select [Save in other folders] on the main screen of Image Creator 1.0A, and select the destination folder for saving:

On the [Specifying destination folder for saving] screen, in the [File location] menu, or using the folder icon, move to the location of the folder from which you want to write, open the folder, and then press the [Save] button.



Note:

You can create a new folder using the "Create New Folder" button. However, in Windows 98SE/Me, this button does not appear.



Discount-Merchant.com (800) 281-8860
THE TRUSTED SOURCE FOR PROJECTOR LAMPS AND ACCESSORIES

Use of Image Creator 1.0A

DCF standard

DCF standard has the following requirements:

■ Directory (folder) name

Directories must be created under a DCIM directory.

- Data located in directories other than "DCIM" directory is not recognized.

A directory name must be made of "a three-digit number (directory number) + 5 alphabets" (e.g. 100abcde).

- Numbers between 100 and 999 can be used for a three-digit number and 37 different characters can be used for 5 alphabets including 0, 1, 2, 3, 4, 5, 6, 7, 8, 9, a, b, c, d, e, f, g, h, i, j, k, l, m, n, o, p, q, r, s, t, u, v, w, x, y, z, _(under bar). (The name is not case sensitive. Double-byte characters cannot be used.)

Multiple directories with the same three-digit number (directory number) cannot be created.

Layering of directories is not supported.

■ File name

A file name must be made of "4 alphabets + a four-digit number (file number) + .jpg (extension)" (e.g. abcd0001.jpg)

Four alphabets:

37 characters, including 0, 1, 2, 3, 4, 5, 6, 7, 8, 9, a, b, c, d, e, f, g, h, i, j, k, l, m, n, o, p, q, r, s, t, u, v, w, x, y, z and _ (under bar) are available. For four-digit numerals, numbers ranging from 0001 to 9999 are available. (Upper and lower cases can be used.)

Multiple files with the same four-digit number (file number) cannot be created in the same directory.

■ File format

Only Exif2.1-compliant JPEG image is supported.



Discount-Merchant.com (800) 281-8860
THE TRUSTED SOURCE FOR PROJECTOR LAMPS AND ACCESSORIES

How to use SD card

Playing images of SD Memory Card

1 Change to "SD CARD" using the input switching (RGB) button of the projector or remote controller

A folder selection screen appears.

2 Using [▲▼], select a folder and press [ENTER].

A file selection screen appears.

Notes:

- If three or more folders are found, press the ▼ button and the next three (or less) folders will be shown in turn.
- If no thumbnail has been incorporated in the image file in advance, it will take a longer time before image appears.
- A folder that contains no image file cannot be selected.
- To return to the folder selection screen, press the MENU button.

3 Using [◀▶], select a file(s) and press the [ENTER] button

The selected image will be displayed in full screen mode.

If "OFF" has been selected for auto play, the ◀ and ▶ buttons can select the previous or next image for display.

Notes:

- If ten or more files are found, press the ▼ button when the bottom row files are highlighted, or press the ▶ button when the right bottom file is highlighted. This will show another nine (or less) files in turn.
- To return to the file selection screen, press the MENU button.
- If "ON" has been selected for auto play, the image will be displayed in full screen mode and automatic replay will start.

How to use SD card

SD Viewer (SD guide display)

Displayed indications are different between those on the folder selection screen and those on the file selection screen as described below.

■ Folder selection screen

Top row: Name and number of the folder selected by cursor /number of all folders

Middle row: Free space on the SD Memory Card

Bottom row: Settings of automatic play (auto play) including:
Auto play ON/OFF, play interval, repetition times

■ File selection screen

Top row: Name of folder, and name and number of the file selected by cursor /number of all files

Middle row: Free space on the SD Memory Card

Bottom row: Settings of automatic play (auto play) including:
Auto play ON/OFF, play interval, repetition times



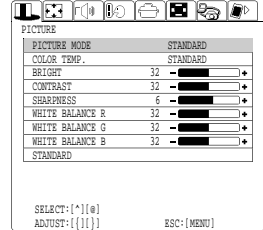
Discount-Merchant.com (800) 281-8860
THE TRUSTED SOURCE FOR PROJECTOR LAMPS AND ACCESSORIES

How to use SD card

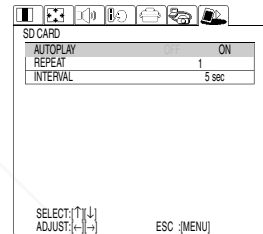
Settings of automatic play (auto play)

Since automatic play is set to OFF on shipping, the following settings are necessary.

- 1 Press the [MENU] button.**
The menu screen appears.



- 2 Using [◀▶], display the SD Memory Card screen.**



- 3 Press the [ENTER] button**

- 4 Using [▲▼], select items, and using [◀▶], make settings.**

Auto play:

ON: When images are projected, frames will be displayed in turn automatically
OFF: Image frames will not be changed automatically.

Repeat:

1 to 10: If Auto play is set to "ON", image projection cycle will be repeated automatically by selected times.

Continuous: If Auto play is set to "ON", image projection cycle will be repeated endlessly.

Play interval:

This specifies the time period for changing to the next image if Auto play is set to "ON". The period can be set to 5 to 60 seconds with the steps of 5 seconds.

Notes:

It may take time until the image is projected on the screen depending on images. In such cases, the play interval may become longer than the set time.

How to use SD card

When setting of automatic play is complete, set the channel to [SD CARD] using the input change (RGB) button of the projector or remote control. Settings of automatic play will be displayed in the bottom row of SD VIEWER.

Select a desired folder for automatic play, then select image files and display a magnification screen, and from now on images will be projected in turn following the settings of automatic play. During automatic play, the user can press the [MENU] button to stop the play.



Discount-Merchant.com (800) 281-8860
THE TRUSTED SOURCE FOR PROJECTOR LAMPS AND ACCESSORIES

Uninstallation of software

Wireless Manger 3.0

From desktop, go to [Start] → [All programs] → [Wireless Manager], and select [Uninstall Wireless Manager ver3.0].

Follow the instructions on the screen to uninstall the software.

Image Creator 1.0A

From desktop, go to [Start] → [All programs] → [Image Creator], and select [Uninstall Image Creator ver.1.0A].

Follow the instructions on the screen to uninstall the software.

Wireless LAN Driver

■ For Windows XP

- 1** Set the supplied CD-ROM in the CD-ROM drive.
- 2** In the CD-ROM, go to [Wireless Card] and run [setup.exe].
This activates the uninstalling software.
- 3** Confirm the checkmark in [Remove] is proper and click [Next].
- 4** When an "Uninstalled" message appears, click [Finish].

■ For Windows 2000/Me/98SE:

1 Go to [Start] → [All Programs] → [Wireless Card], and run [Uninstalled].

2 Confirm the checkmarks in [Remove] is proper and Click [Next].

3 Confirm that checkmark in [Yes, I want to restart my computer now.] and click [Finish].

Explanation of terms

LAN

Abbreviation of Local Area Network, including wired LAN and wireless LAN; a relatively small-range network developed in a company or in a building.

TCP/IP

Abbreviation for Transmission Control Protocol/Internet Protocol. The standard protocol for the Internet.

A protocol is a set of specifications and agreements which allow two computers to communicate with each other.

IP Address

An Internet Protocol (IP) is a protocol used for the transmission of data, and the IP address is the address of the destination where the data is being sent to. Identical IP addresses cannot be used for two different devices within the one LAN.

Subnet Mask

Limits the range of IP addresses that can be assigned to a computer when using a TCP/IP connection, in order to allow a network to be divided into several sub-sections. The parameters which divide the sub-network in this way are called the subnet mask.

Gateway

A junction point where different types of networks are connected to each other.

It is used to refer to the hardware and software which is used when connecting a particular network to another network which has been set up under different network specifications. It makes adjustments for differences in the protocols used by the two networks and makes it possible to connect to other networks.

DHCP

Abbreviation for Dynamic Host Configuration Protocol.

A function to automatically assign an IP address to connected devices. If a device having functions of DHCP server is detected within the LAN, an IP address is automatically assigned to each of connected devices. This function is not supported by the projector side.

Ad Hoc Mode

This mode allows direct communication between the projector and a personal computer having a wireless LAN inside or a personal computer to which a wireless LAN card is fitted. It is necessary to establish a common channel both to the projector and the personal computer. Some cards are not compatible to this mode.

Infrastructure Mode

This mode allows communication via an access point connected to a wired LAN. Even a personal computer to which any wireless LAN card is not fitted can transfer images to the projector via an access point.

Explanation of terms

802.11 Ad Hoc (peer-to-peer) Mode

This mode allows direct communication between the projector and a personal computer having a wireless LAN inside or a personal computer to which a wireless LAN card is fitted. It is necessary to make settings of SSID.

Access Point

A point of connection between a wired LAN and a wireless LAN.

Channel

If several access points which use the same frequency band are located near each other, radio transmission interference between these access point can occur when they are being used, and this can in turn result in drops in transmission speeds. In order to reduce this problem when using wireless LANs, the frequency band can be divided into 11 channels for communication purposes. (The number of channels varies depending on the country.) However, because interference between adjacent channels can occur, the channels available for use are normally spaced 2 or 3 channels apart from each other.

SSID

Abbreviation for Service Set ID. Wireless LANs that utilise access points require the setting of SSID identification codes in order to distinguish between devices which are a part of the LAN and devices which are not.

Wireless LAN cards of some manufacturers use the name of "ESSID" or "Network name" instead of SSID.

WEP

Abbreviation for Wired Equivalent Privacy. A method of encrypting transmitted data. An encryption key is generated and is given only to the person who will be using the transmitted data, in order to prevent third parties from decoding the transmitted data. Not available with this product.

JPEG

Abbreviation for Joint Photographic Experts Group. JPEG is the name of an international organisation which was jointly established by the ISO and the ITU-TS (formerly the CCIT), but the term is normally used to refer to the specifications for the still picture compression algorithm which was formulated by the JPEG. This algorithm allows still images such as photographs, single frames of moving images and scanned images to be compressed to up to 1/100th of their original sizes. However, images which are compressed in this way cannot be fully restored to their original quality (some deterioration in quality occurs), so that compression rates of 1/5 to 1/30 are normally used. Because of differences in color separation, two format sub-types are used: RGB (red, green and blue) and CMYK (cyan, magenta, yellow, black).

The projector and the Image Creator 1.0 software do not support the CMYK sub-type of JPEG file.

BMP

Abbreviation for BitMaP. This is the standard image format for the bitmapped files (image files consisting of a collection of dots) which are handled by Windows. Color levels of monochrome, 16 colors, 256 colors and 16.7 million colors are supported.

Explanation of terms

PNG

Abbreviation for Portable Network Graphics.

A high compression rate file format that provides restorable compression for line raster images.

Because it uses restorable compression, it does not result in any loss of image resolution unlike JPEG.

RLE

Abbreviation for Run Length Encoding. It can be used to achieve high rates of compression for image files which contain large areas of a single colour. RLE can be used with monochrome, 16-colour and 256-colour BMP image files. (Image Creator 1.0 does not support files compressed using RLE.)

TIFF

Abbreviation for Tagged-Image File Format. This type of file is used to exchange documents between computers. Colour levels of monochrome, 256 colours and 16.7 million colours are supported. TIFF files in 16.7 million colour format can include transparent colour.

LZW

Abbreviation for Lempel-Ziv-Welch. LZW is a compression method used for TIFF files, and is named thus because it was developed by three people named Lempel, Ziv and Welch. It compresses the files by converting patterns within the images into short codes. There is no deterioration in image quality resulting from compression, but high rates of compression which are comparable to JPEG files cannot be expected to be obtained. (Image Creator 1.0 does not support files compressed using LZW.)

DCF

Abbreviation for Design rule for Camera File system. DCF is a standard which was established by the Japan Electronic Industry Development Association (JEIDA) with the aim of realising a common image file format, directory name format and file name format for the images used with digital still cameras. It is based on recommendations such as Exif Version 2.1.

Exif 2.1

Abbreviation for Exchangeable Image File Format. This is an image file format which was established by the Japan Electronic Industry Development Association (JEIDA). It defines the common information format and range of application for images used with digital still cameras, centering around TIFF and JPEG-format images. Version 2.1 is the latest version of the Exif standard.

PowerPoint

Application software for creating presentations which is included as part of Microsoft Office. 95, 97, 2000 and 2002 versions are available, but the Image Creator 1.0 software which is bundled with the projector is only compatible with the 97, 2000 and 2002 versions.

Before placing a repair order

Please make sure of the following:

Symptom	Please check:
<p>The computer does not recognize the SD card.</p>	<ul style="list-style-type: none"> • Is the PC card adapter inserted into the PC card slot of the PC until it reaches the end? • Is the SD card inserted into the SD card slot of the PC card adapter until it reaches the end? • Is the driver installed? • Are there sufficient IRQ (interrupting signal) numbers? (Refer to the online help of Windows.)
<p>Writing cannot be performed.</p>	<ul style="list-style-type: none"> • Is the write-protect switch of the SD card set to "LOCK"?
<p>The image from the PC is not displayed.</p>	<ul style="list-style-type: none"> • Is the external video output of the notebook computer properly selected? (In some cases, the setting of the output is changed if Fn and F3 buttons are pressed simultaneously. Since this depends on the model, refer to the instruction manual supplied with your PC.)
<p>The PC does not recognize the wireless card.</p>	<ul style="list-style-type: none"> • Is the wireless card inserted into the PC card slot of the PC until it reaches the end? • Is the driver installed? • Had the driver been installed before the wireless card was inserted? • Are there sufficient IRQ (interrupting signal) numbers? (Refer to the online help of Windows.)
<p>Transfer rate has become lower.</p>	<ul style="list-style-type: none"> • If WEP is enabled, transfer operation takes a longer time because the image data needs to be converted. • If another wireless device uses the same channel, the transfer rate may become lower. Select other channel for setting.
<p>Images displayed too slow in live mode</p>	<ul style="list-style-type: none"> • Does the personal computer CPU operate fast enough? Operation in live mode depends on the performance of personal computer CPU. • With Windows XP/2000, the operation speed may decrease remarkably but for the Administrator authority.



Discount-Merchant.com (800) 281-8860
 THE TRUSTED SOURCE FOR PROFESSIONAL AND CONSUMER APPLIANCES

Before placing a repair order

Symptom	Please check:
<p>"Projector search" of the Wireless Manager 3.0 does not detect the projector.</p>	<ul style="list-style-type: none"> • Immediately after the projector is turned on, it is on the way to establish the network communication. Perform the search again after a while. • Check whether the distance is too far between the PC and the projector, or if any obstacle between is making the radio waves unstable. • Make sure that the IP address and the subnet mask are correctly assigned. • Is TCP/IP installed in your personal computer? • Does the WEP setting correspond with that of the projector? Communication with the projector cannot be established if the WEP function was enabled when a third-party wireless card was used or the access point was used. Disable the WEP function. • In the Infrastructure mode, use the same setting for the projector and the PC as the access point "SSID". Alphanumeric characters (case sensitive) can be used for an SSID. Make sure that the user is not using the function for controlling PCs that can communicate with the access point. • In [802.11 ad hoc (peer-to-peer)] mode, the SSID must be of the same settings both for the projector and the personal computer. In addition, SSID is case sensitive. • Is any network device other than the wireless card enabled? Check with the device manager of Windows. • Check if the proxy-client software is in operation. Disable the software when communicating with the projector.
<p>An error message appears saying that this image cannot be displayed although the image can be displayed on the "presentation mode" screen of Wireless Manager 3.0</p>	<ul style="list-style-type: none"> • There are several different formats in JPEG and PNG images and some of them cannot be displayed.
<p>Colours are not displayed properly with Wireless Manager 3.0 and it is hard to read characters.</p>	<ul style="list-style-type: none"> • Right-click the space on the desktop and choose "Properties". On the "Display Properties", open the "Settings" tab and set "Colors" to "High Color [16 bit]" or higher.

Trademark Information

- The SD logo is a trademark.
- Windows and Powerpoint are trademarks or registered trademarks of Microsoft Corporation in the United States of America and other countries.
- Macintosh and Mac are registered trademarks of Apple Computer Inc.
- All other model names, company names or product names are trademarks or registered trademarks of their respective owners. TM and (R) symbols identifying trademarks and registered trademarks are not otherwise used throughout this manual.

ATTENTION

- Unauthorized use or reproduction of this software or this manual in full or in part is strictly forbidden.
- Panasonic assumes no responsibility for any results or effects arising from the use of this software and this manual.
- The specification for this software and the contents of this manual are subject to change without prior notice.



Discount-Merchant.com (800) 281-8860
THE TRUSTED SOURCE FOR PROJECTOR LAMPS AND ACCESSORIES

Matsushita Electric Industrial Co., Ltd.

Web Site: <http://www.panasonic.co.jp/global/>

© 2003 Matsushita Electric Industrial Co., Ltd.

M0503-0



Disclaimer

This user manual is provided as a free service by FixYourDLP.com. FixYourDLP is in no way responsible for the content of this manual, nor do we guarantee its accuracy. FixYourDLP does not make any claim of copyright and all copyrights remain the property of their respective owners.

About FixYourDLP.com

FixYourDLP.com (<http://www.fixyourdpl.com>) is the World's #1 resource for media product news, reviews, do-it-yourself guides, and manuals.

Informational Blog: <http://www.fixyourdpl.com>

Video Guides: <http://www.fixyourdpl.com/guides>

User Forums: <http://www.fixyourdpl.com/forum>

FixYourDLP's Fight Against Counterfeit Lamps:

<http://www.fixyourdpl.com/counterfeits>

Sponsors:

RecycleYourLamp.org – Free lamp recycling services for used lamps:

<http://www.recycleyourlamp.org>

Lamp Research - The trusted 3rd party lamp research company:

<http://www.lampresearch.com>

Discount-Merchant.com – The worlds largest lamp distributor:

<http://www.discount-merchant.com>



FixYourDLP.com

Sponsored by 